

Exam : NS0-501

Title : Network Appliance Implementation Engineer-SAN

Version : DEMO

<http://www.test4actual.com>

1. A company has deployed a NetApp dual controller FAS3100 series with iSCSI. Currently, there are five Windows servers and three Novell NetWare servers connected to the IP SAN. The customer wants to connect an HP-UX server to the IP SAN.

Which cfmodes allows all operating systems to co-exist in the IP SAN?

- A.single_image
- B.standby
- C.cfmodes not applicable
- D.dual_fabric

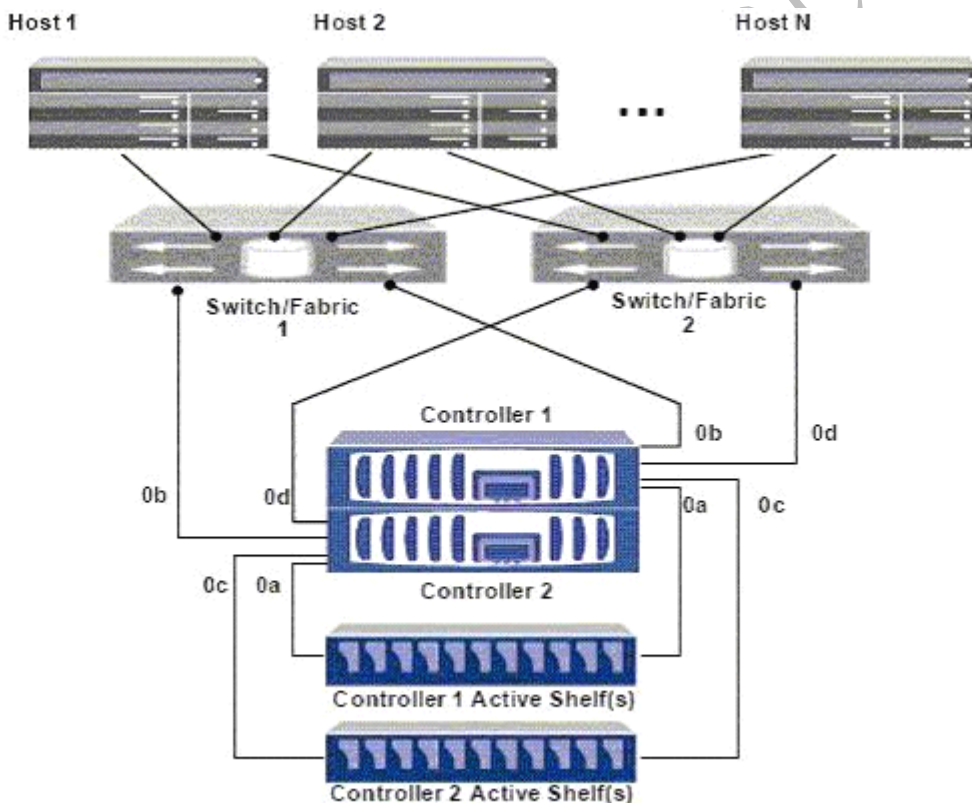
ANSWER: C

2. Click the Exhibit button.

A Solaris 10 host with VERITAS Storage Foundation 4.1 is FCP attached to a FAS3140 high availability storage system running single image cfmodes.

Using the diagram shown, which ports will be considered active by VERITAS DMP using the NetApp ASL to a LUN on controller 1 mapped to host 1?

- A.Port 0b on controller 1 only
- B.Port 0d on controller 1 only
- C.Port 0b and 0d on controller 1 only
- D.Ports 0b and 0d on both controller 1 and controller 2



ANSWER: C

3. For which four operations would you use igroup throttles on a NetApp storage solution? (Choose four.)

- A. to assign a specific percentage of the queue resources on each physical port to the igroup
- B. to manage pathing to the LUNs
- C. to reserve a minimum percentage of queue resources for a specific igroup
- D. to limit the number of concurrent I/O requests an initiator can send to the storage system
- E. to restrict an igroup to a maximum percentage of use
- F. to manage space reclamation

ANSWER: ACDE

4. Which command do you use to see the rate of change between two successive Snapshot copies in a flexible volume in Data ONTAP?

- A. snap diff
- B. snap calculate
- C. snap delta
- D. snap space

ANSWER: C

5. Which utility on Windows 2003 and Windows 2008 can be used to collect information about firmware and driver versions for an Emulex LP1xxxx/LPe1xxx HBA?

- A. EMutil
- B. SANutil
- C. fcp config
- D. SANsurfer
- E. HBAnywhere

ANSWER: E

6. Which utility on Solaris 10 can be used to collect information about firmware and driver versions for an Emulex LP1xxxx/LPe1xxxx HBA?

- A. EMutil
- B. SANutil
- C. hbainfo
- D. SANsurfer
- E. HBAnywhere

ANSWER: E

7. Which utility on Solaris 10 can be used to collect information about firmware and driver versions for a Qlogic QLAxxx/QLExxxx HBA?

- A. EMutil
 - B. SANutil
 - C. cfgadmin
 - D. SANsurfer
 - E. HBAnywhere
- ANSWER: D

8. An organization currently has a NetApp Fibre Channel block-based solution. With limited budget and resources, they want to create a new disaster recovery site that utilizes a NetApp solution.

What would the optimal solution include?

- A. SnapMover and Fibre Channel at the disaster recovery site for all hosts
- B. SnapMirror and iSCSI at the disaster recovery site for all hosts
- C. Fibre Channel at both locations using ftp to replicate storage
- D. MetroCluster and NAS

ANSWER: B

9. A company has a Fibre Channel environment and wants to connect a new host in a remote data center using 50/125um OM2 multi-mode fiber cable and needs to support 2 Gb speeds.

What is the maximum distance of the cable run supported in this situation?

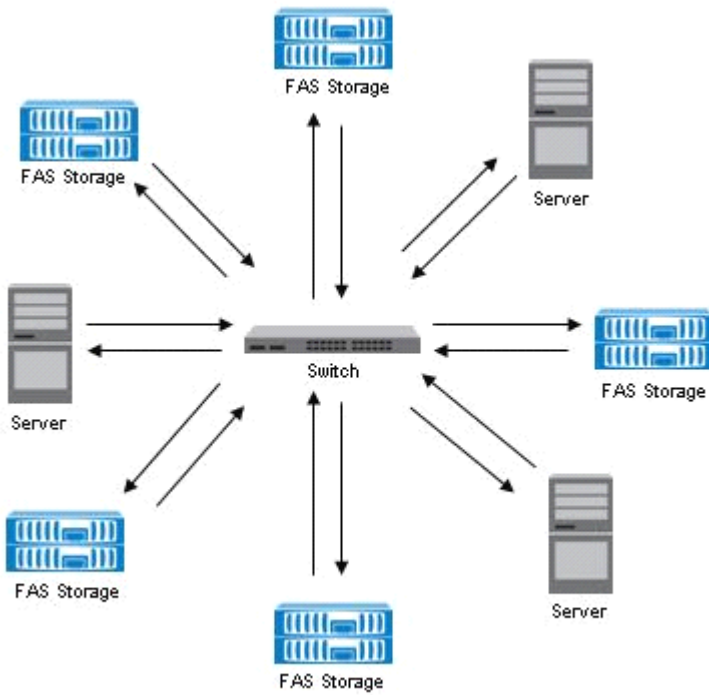
- A. 50/125um OM2 multi-mode fiber cable supports up to 500 meters at 2 Gb.
- B. 50/125um OM2 multi-mode fiber cable supports up to 10000 meters at 2 Gb.
- C. 50/125um OM2 multi-mode fiber cable supports up to 150 meters at 2 Gb.
- D. 50/125um OM2 multi-mode fiber cable supports up to 300 meters at 2 Gb.

ANSWER: D

10. Click the Exhibit button.

Given the information provided in the diagram, what is the appropriate FC topology?

- A. point-to-point
- B. switched fabric
- C. arbitrated loop
- D. ring



ANSWER: B

11. Which FC SAN topology provides the best performance and scalability?

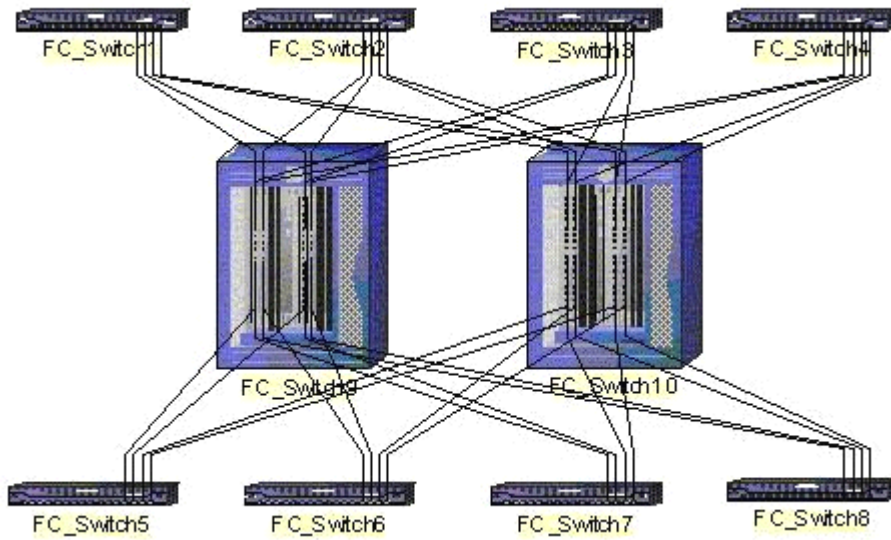
- A.cascade
- B.core-edge
- C.full mesh
- D.partial mesh

ANSWER: B

12. Click the Exhibit button.

Based on the diagram shown, what is the appropriate FC switch topology?

- A.full mesh
- B.core-edge
- C.full cascade
- D.partial mesh

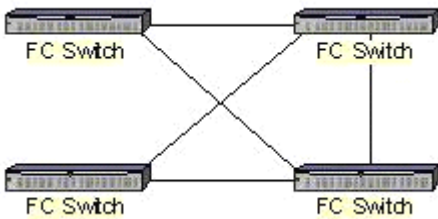


ANSWER: B

13. Click the Exhibit button.

Based on the diagram shown, what is the appropriate FC switch topology?

- A. core-edge
- B. full mesh
- C. partial mesh
- D. partial cascade



ANSWER: C

14. A 200-GB LUN is created in an empty 500-GB volume with the volume guarantee option set to Volume. LUN reservation is enabled and the fractional reserve is set to 100.

Directly after LUN creation, what is the maximum free space available in the volume?

- A. 200 GB
- B. 300 GB
- C. 400 GB
- D. 500 GB

ANSWER: B

15. A 100-GB thinly provisioned LUN is allocated to a Windows host. 100 GB of data is written into the LUN. The current capacity utilization on the disk array as well as the host is 100%. 50 GB of data is deleted from the LUN. Space reclaimer has NOT been run.

What is the current capacity utilization on the disk array as well as the host?

- A. 50% on the host, 100% on the disk array
- B. 100% on the host, 50% on the disk array
- C. 50% on the host, 50% on the disk array
- D. 100% on the host, 100% on the disk array

ANSWER: A

www.test4actual.com