

Exam : 70-410

**Title : Installing and Configuring
Windows Server 2012**

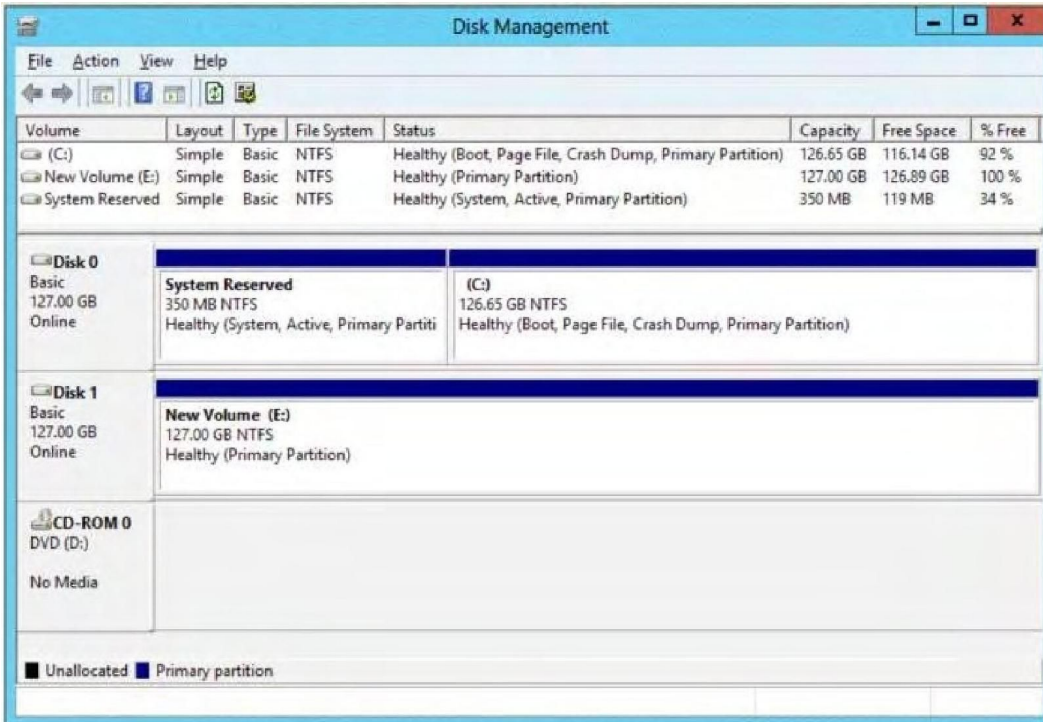
Version : DEMO

<http://www.test4actual.com>

QUESTION NO: 1

You have a server named Server1 that runs Windows Server 2012. Server1 has the Hyper-V server role installed.

The disks on Server1 are configured as shown in the exhibit. (Click the Exhibit button.)



You create a virtual machine on Server1.

You need to ensure that you can configure a pass-through disk for the virtual machine.

What should you do?

- A. Delete partition E.
- B. Convert Disk 1 to a GPT disk.
- C. Convert Disk 1 to a dynamic disk.
- D. Take Disk 1 offline.

Answer: D

QUESTION NO: 2

You have a server named Server1 that runs Windows Server 8. Server1 has the Hyper-V server role installed.

You have fixed-size VHD named Files.vhd.

You need to make the contents in Files.vhd available to several virtual machines.

The solution must meet the following requirements:

- * Ensure that if the contents are changed on any virtual machine, the changes are not reflected on the other virtual machines.
- * Minimize the amount of disk space used.

What should you do?

- A. Create a dynamically expanding VHDX. Transfer the information from Files.vhd to the new VHDX file.
- B. Create a fixed-size VHDX. Transfer the information from Files.vhd to the new VHDX file.
- C. Convert Files.vhd to a dynamically expanding VHD.
- D. Create differencing VHDXs that use Files.vhd as the parent disk.

Answer: D

QUESTION NO: 3

You have a server named Server1 that runs Windows Server 2012. Server1 has the Hyper-V server role installed.

On Server1, you create a virtual machine named VM1. VM1 has a legacy network adapter. You need to assign a specific amount of available network bandwidth to VM1.

What should you do first?

- A. Remove the legacy network adapter, and then run the Set-VMNetworkAdaptercmdlet.
- B. Add a second legacy network adapter, and then run the Set-VMNetworkAdaptercmdlet.
- C. Add a second legacy network adapter, and then configure network adapter teaming.
- D. Remove the legacy network adapter, and then add a network adapter.

Answer: D

QUESTION NO: 4

Your network contains an Active Directory domain named adatum.com. The domain contains a server named Server1 that runs Windows Server 2012.

On a server named Core1, you perform a Server Core Installation of Windows Server 2012. You join Core1 to the adatum.com domain.

You need to ensure that you can use Event Viewer on Server1 to view the event logs on Core1.

What should you do on Core1?

- A. Run the Enable-NetFirewallRulecmdlet.

- B. Run sconfig.exe and configure remote management.
- C. Run the Disable-NetFirewallRulecmdlet.
- D. Run sconfig.exe and configure the network settings.

Answer: A

QUESTION NO: 5

Your network contains a file server named Server1 that runs Windows Server 2012. All client computers run Windows 8.

You need to ensure that when users are connected to the network, they always use local offline files that are cached from Server1.

Which Group Policy setting should you configure?

- A. Configure slow-link mode
- B. Configure Slow link speed
- C. Enable file synchronization on costed networks
- D. Turn on economical Application of Administratively assigned Offline Files

Answer: A

QUESTION NO: 6

Your network contains an Active Directory domain named contoso.com. All servers run either Windows Server 2008 R2 or Windows Server 2012. All client computers run either Windows 7 or Windows 8.

The domain contains a member server named Server1 that runs Windows Server 2012. Server1 has the File and Storage Services server role installed.

On Server1, you create a share named Share1.

You need to ensure that users can use Previous Versions to restore the files in Share1.

What should you configure on Server1?

- A. The Shadow Copies settings
- B. A Windows Server Backup schedule
- C. A data recovery agent
- D. The Recycle Bin properties

Answer: A

QUESTION NO: 7

You have a server named Server1 that runs Windows Server 2012. Server1 has the Print and Document Services server role installed.

Server1 is connected to two identical print devices.

You need to ensure that users can submit print jobs to the print devices. The solution must ensure that if one print device fails, the print jobs will print automatically on the other print device.

What should you do on Server1?

- A. Add two printers and configure the priority of each printer.
- B. Add one printer and configure printer pooling.
- C. Install the Network Load Balancing (NLB) feature, and then add one printer.
- D. Install the Failover Clustering feature, and then add one printer.

Answer: B

QUESTION NO: 8

Your network contains a server named Server1 that runs Windows Server 2012. Server1 has the Print and Document Services server role installed.

You connect a new print device to the network. The marketing department and the sales department will use the print device.

You need to provide users from both departments with the ability to print to the network print device. The solution must ensure that if there are multiple documents queued to print, the documents from the sales users print before the documents from the marketing users.

What should you do on Server1?

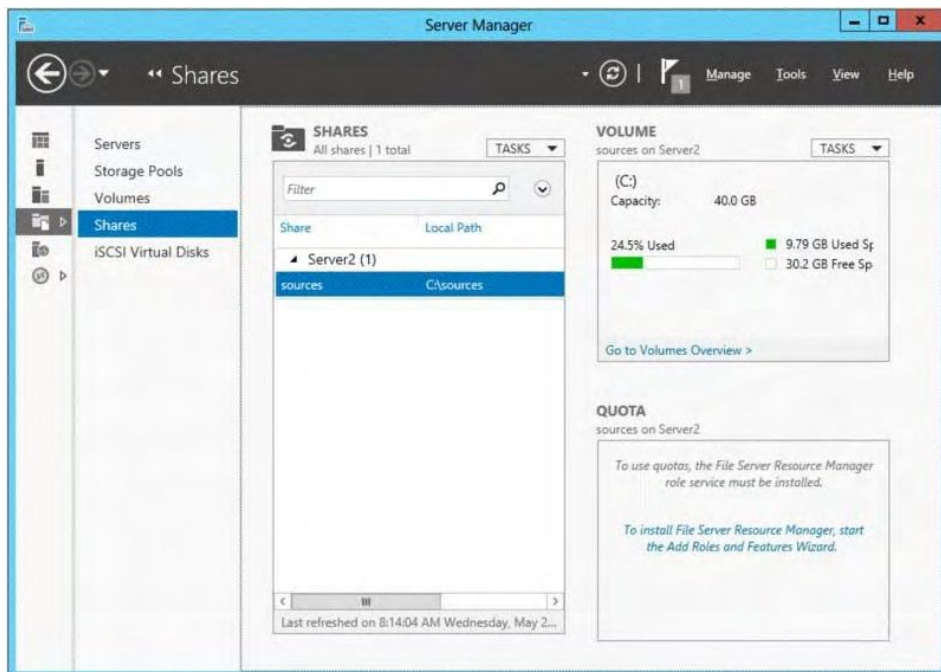
- A. Add two printers. Modify the priorities of each printer and the security settings of each printer.
- B. Add two printers and configure printer pooling.
- C. Add one printer and configure printer pooling.
- D. Add one printer. Modify the printer priority and the security settings.

Answer: A

QUESTION NO: 9

You have a server named Server2 that runs Windows Server 2012.

You open Server Manager on Server2 as shown in the exhibit. (Click the Exhibit button.)



The Everyone group has read share permission and read NTFS permission to Sources.

You need to ensure that when users browse the network, the Sources share is not visible.

What should you do?

- A. From the properties of the Sources folder, remove the Sources share, and then share the Sources folder as Sources\$.
- B. From the properties of the Sources folder, deny the List Folder Contents permission for the Everyone group.
- C. From the properties of the Sources share, configure access-based enumeration.
- D. From the properties of the Sources folder, configure the hidden attribute.

Answer: A

QUESTION NO: 10

Your network contains an Active Directory domain named contoso.com. The network contains a server named Server1 that runs Windows Server 8 and a server named Server2 that runs Windows Server 2008 R2 Service Pack 1 (SP1). Server1 and Server2 are member server.

You need to ensure that you can manage Server2 from Server1 by using Server Manager.

Which two tasks should you perform? (Each correct answer presents part of the solution. Choose two.)

- A. Install Remote Server Administration Tools on Server1.

- B. Install Windows Management Framework 3.0 on Server2.
- C. Install the Windows PowerShell 2.0 engine on Server1.
- D. Install Microsoft .NET Framework 4 on Server2.
- E. Install Remote Server Administration Tools on Server2.

Answer: B,D

QUESTION NO: 11

Your network contains an Active Directory domain named contoso.com. The network contains a member server named Server1 that runs Windows Server 2012. Server1 has the DNS Server server role installed and has a primary zone for contoso.com.

The Active Directory domain contains 500 client computers. There are an additional 20 computers in a workgroup.

You discover that every client computer on the network can add its record to the contoso.com zone.

You need to ensure that only the client computers in the Active Directory domain can register records in the contoso.com zone.

What should you do first?

- A. Move the contoso.com zone to a domain controller that is configured as a DNS server.
- B. Configure the Dynamic updates settings of the contoso.com zone.
- C. Sign the contoso.com zone by using DNSSEC.
- D. Configure the Security settings of the contoso.com zone.

Answer: A

QUESTION NO: 12

Your company has a remote office that contains 1,600 client computers on a single subnet.

You need to select a subnet mask for the network that will support all of the client computers. The solution must minimize the number of unused addresses.

Which subnet mask should you select?

- A. 255.255.248.0
- B. 255.255.252.0
- C. 255.255.254.0
- D. 255.255.240.0

Answer: A

QUESTION NO: 13 DRAG DROP

You plan to deploy a DHCP server that will support four subnets. The subnets will be configured as shown in the following table.

Subnet name	Number of hosts
Subnet1	50
Subnet2	110
Subnet3	400
Subnet4	525

You need to identify which network ID you should use for each subnet.

What should you identify?

To answer, drag the appropriate network ID to the each subnet in the answer area.

Answer:

QUESTION NO: 14

Your network contains three servers that run Windows Server 2012. The servers are configured as shown in the following table.

Server name	Server role
Server1	Active Directory Domain Services DHCP Server DNS Server
Server2	Remote Access DHCP Server
Server3	File and Storage Services

Server3 is configured to obtain an IP address automatically.

You need to ensure that Server3 only receives an IP address from Server1. The IP address must always be the same.

Which two tasks should you perform? (Each correct answer presents part of the solution. Choose two.)

- A. Create an exclusion on Server1.
- B. Create a filter on Server1.
- C. Create a reservation on Server2.
- D. Create a reservation on Server1.
- E. Create a filter on Server2.

Answer: D,E