

Exam : Cisco 642-564

**Title : Security Solutions for Systems
Engineers**

Update : Demo

1. Which two components should be included in a network design document? (Choose two.)

- A. complete network blueprint
- B. configuration for each device
- C. detailed part list
- D. operating expense
- E. risk analysis

Correct: A C

2. In which two ways do Cisco ASA 5500 Series Adaptive Security Appliances achieve containment and control? (Choose two.)

- A. by enabling businesses to create secure connections
- B. by preventing unauthorized network access
- C. by probing end systems for compliance
- D. by tracking the state of all network communications
- E. by performing traffic anomaly detection

Correct: B D

3. What is a benefit of the Cisco Integrated Services Routers?

- A. Intel Xeon CPUs
- B. built-in event correlation engine
- C. built-in encryption acceleration
- D. customer programmable ASIC

Correct: C

4. Look at the picture.

Drag the descriptions on the left to the corresponding security feature on the right. Not all descriptions are used.

- allows control of web traffic based on security policy
- can control protocol misuse
- can proactively stop network attacks
- leads to smaller holes in ACLs
- allows designated users to gain temporary access

- application-based filtering
- lock-and-key security
- stateful packet inspection
- URL filtering

Correct:

5. What is a benefit of IPSec + GRE?

- A. bandwidth conservation
- B. no need for a separate client
- C. full support of Cisco dynamic routing protocols
- D. support of dynamic connections

Correct: C

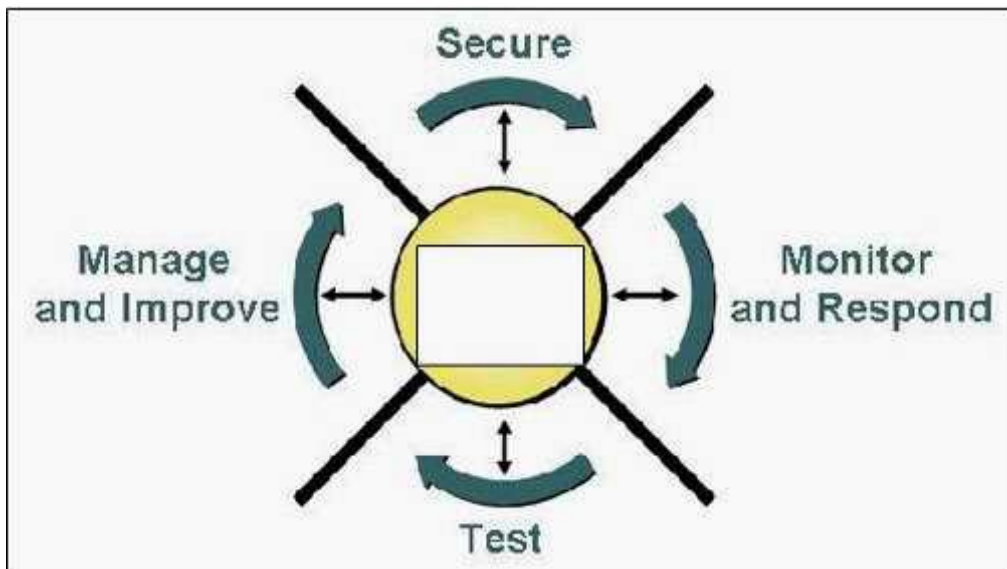
6. Which Cisco IOS feature uses multipoint GRE and the Next Hop Resolution Protocol to create

dynamic IPSec tunnels between spoke (branch) sites?

- A.Easy VPN
- B.V3PN
- C.DMVPN
- D.Web VPN

Correct:C

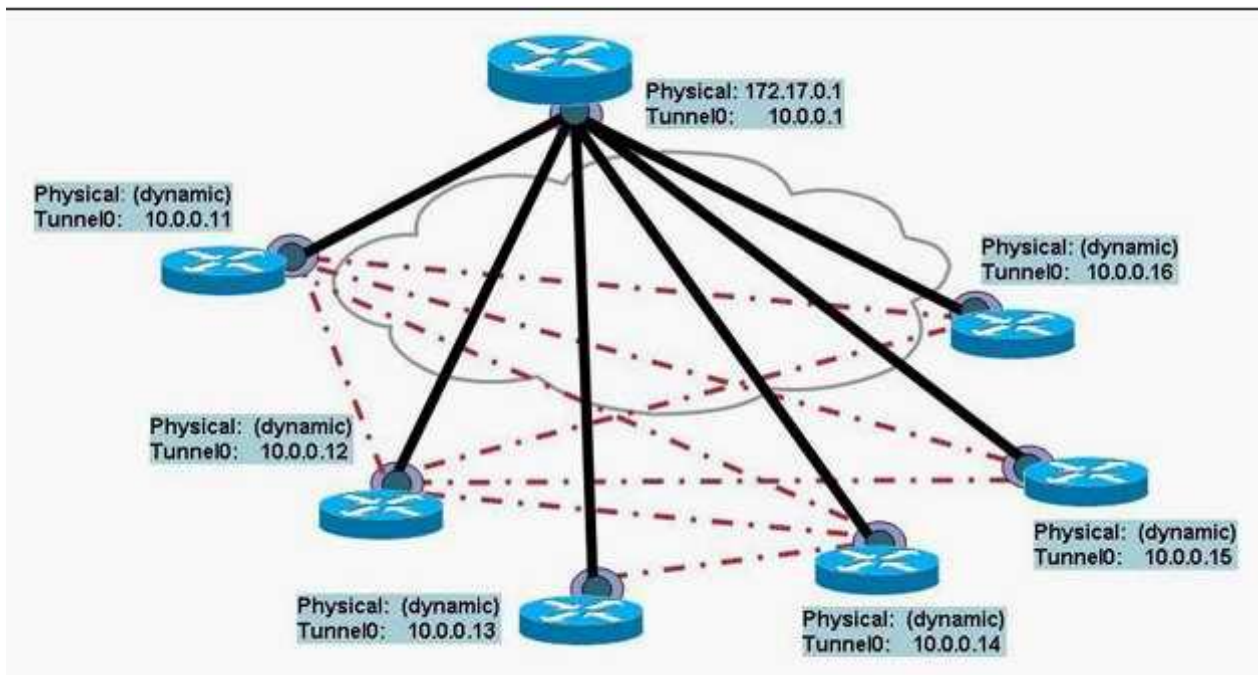
7.Refer to the exhibit. Network security is a continuous process that is built around which element?



- A.business requirements
- B.corporate security policy
- C.customer needs
- D.security best practice

Correct:B

8.Refer to the exhibit. As each spoke site is added, spoke-to-spoke and spoke-to-hub connectivity will be required. What is the best VPN implementation option?



- A. GRE over IPsec with dynamic routing
- B. IPsec DMVPN
- C. IPsec Easy VPN
- D. V3PN

Correct: B

9. Which statement is true about the Cisco Security MARS Global Controller?

- A. The Global Controller receives detailed incidents information from the Local Controllers, and correlates the incidents between multiple Local Controllers.
- B. The Global Controller centrally manages a group of Local Controllers.
- C. Rules that are created on a Local Controller can be pushed to the Global Controller.
- D. Most data archiving is done by the Global Controller.

Correct: B

10. Which two components should be included in a detailed design document? (Choose two.)

- A. data source
- B. existing network infrastructure
- C. organizational chart
- D. proof of concept
- E. vendor availability

Correct: B D

11. What is a valid method of verifying a network security design?

- A. network audit
- B. network health analysis
- C. network performance test
- D. pilot or prototype network

Correct: D

12. Which statement is true about the built-in hardware-based encryption that is included with

Cisco Integrated Services Routers?

- A.It supports SRTP.
- B.It supports 256-bit AES encryption.
- C.It is two times faster than previous modules.
- D.It stores VPN credentials.

Correct:B

13.On the Cisco Security MARS appliance, what is used to facilitate the management of Event, IP, Service and User management?

- A.groups
- B.custom parser
- C.rules
- D.signatures
- E.audit trail log

Correct:A

14.Which protocol is used for transporting the event data from Cisco IPS 5.0 and later devices to the Cisco Security MARS appliance?

- A.RDEP over SSL
- B.SDEE over SSL
- C.SSH
- D.syslog

Correct:B

15.Look at the picture.

Drag the descriptions from the left to the corresponding Cisco security module on the right. Not all descriptions are used.

defends against DDoS attacks

offers preconnection Security Posture Assessment

offers protection based on Adaptive Security Algorithm

platform for processing attack traffic at Gbps line rate

supports multiple security contexts

Cisco Anomaly Guard Module

Cisco Firewall Services Module

Correct:

Green choice1---->Yellow Choice1

Green choice4---->Yellow Choice2

Green choice5---->Yellow Choice3

Green choice3---->Yellow Choice4

16.Which two are parts of the Network Security Lifecycle? (Choose two.)

- A.Purchase
- B.Operate
- C.Integrate
- D.Design

E.Develop

Correct: B D

17.Which two are true about Cisco AutoSecure? (Choose two.)

- A.blocks all IANA-reserved IP address blocks
- B.enables identification service
- C.enables log messages to include sequence numbers and time stamps
- D.disables tcp-keepalives-in and tcp-keepalives-out
- E.removes the exec-timeout

Correct: A C

18.What is a benefit of high-performance AIM that is included with Cisco Integrated Services Routers?

- A.hardware-accelerated packet inspection engine
- B.hardware-based encryption and compression
- C.removable secure credentials
- D.support of SRTP

Correct: B

19.Look at the picture.

Cisco IOS contains new features to provide Adaptive Threat Defense. Drag each feature on the left to the corresponding function on the right. Not all features are used.

application inspection and control	Application Security
peer router authentication	Anti-X
enhanced inline IPS	Containment and Control
Network Foundation Protection	

Correct:

Green choice1---->Yellow Choice1

Green choice3---->Yellow Choice2

Green choice4---->Yellow Choice3

20.Which three components should be included in a security policy? (Choose three.)

- A.identification and authentication policy
- B.incident handling procedure
- C.security best practice
- D.security product recommendation
- E.software specifications
- F.statement of authority and scope

Correct: A B F

21.Which three are included with the Cisco Security Agent? (Choose three.)

- A.buffer overflow protection
- B.Day Zero virus and worm protection

- C. Cisco Easy VPN Client
- D. host-based intrusion prevention
- E. plug-in interface to query posture providers
- F. packet sniffer

Correct: A B D

22. Identify two ways to create a long-duration query on the Cisco Security MARS appliance. (Choose two.)

- A. by modifying an existing report
- B. by saving a query as a report
- C. by submitting a query in line
- D. by submitting a batch query
- E. by saving a query as a rule

Correct: A D

23. Which component of the Cisco NAC framework is responsible for compliance evaluation and policy enforcement?

- A. Cisco Secure ACS server
- B. Cisco Trust Agent
- C. network access devices
- D. posture validation server

Correct: A

24. Look at the picture.

Drag each activity on the left to the corresponding Network Security Lifecycle task on the right. Not all activities are used.

perform impact analysis of new software and features	<table border="1" style="width: 100%; border-collapse: collapse;"> <tr> <td style="background-color: #f2f2f2; text-align: center;">Plan</td> </tr> <tr> <td style="background-color: #fff2cc;"> </td> </tr> <tr> <td style="background-color: #fff2cc;"> </td> </tr> <tr> <td style="background-color: #f2f2f2; text-align: center;">Design</td> </tr> <tr> <td style="background-color: #fff2cc;"> </td> </tr> <tr> <td style="background-color: #fff2cc;"> </td> </tr> <tr> <td style="background-color: #f2f2f2; text-align: center;">Optimize</td> </tr> <tr> <td style="background-color: #fff2cc;"> </td> </tr> <tr> <td style="background-color: #fff2cc;"> </td> </tr> </table>	Plan			Design			Optimize		
Plan										
Design										
Optimize										
perform analysis and create documentation										
develop sample configurations										
specify hardware and software requirements										
conduct a Security Posture Assessment										
monitor and inspect security logs										
develop an implementation plan										

Correct:

Green choice1---->Yellow Choice1

Green choice2---->Yellow Choice2

Green choice3---->Yellow Choice3

Green choice4---->Yellow Choice4

Green choice5---->Yellow Choice5

Green choice6---->Yellow Choice6

25. In which two ways does 802.1x benefit businesses in terms of trust and identity? (Choose two.)

- A. allows a user-based policy to be dynamically applied to switched ports
- B. identifies which client is consuming how much bandwidth
- C. prevents any unauthorized device from connecting
- D. probes client devices for compliance
- E. stops malicious code from entering the network

Correct: A C

26. Which two statements about the Firewall Services Module are true? (Choose two.)

- A. For traffic from high to low security levels, no access control list is needed.
- B. Interfaces with the same security level cannot communicate without a translation rule.
- C. Two VLAN interfaces connect MSFC and FWSM.
- D. Up to 1 million simultaneous connections are possible.
- E. Up to 100 separate security contexts are possible.

Correct: D E

27. When a FWSM is operating in transparent mode, what is true?

- A. Each interface must be on the same VLAN.
- B. The FWSM does not support multiple security contexts.
- C. Each directly connected network must be on the same subnet.
- D. The FWSM supports up to 256 VLANs.

Correct: C

28. What are two beneficial functions of the CiscoWorks VPN/Security Management Solution? (Choose two.)

- A. detects, locates, and mitigates rogue access points
- B. performs dynamic visualization for fast and intuitive threat identification, tracking, and analysis
- C. performs monitoring and tracking of network response time and availability
- D. provides functions for monitoring and troubleshooting the health and performance of security devices
- E. performs real-time monitoring of site-to-site VPN, remote-access VPN, firewall, and IPS services

Correct: D E

29. Which two features can the USB eToken for Cisco Integrated Services Router be used for? (Choose two.)

- A. distribution and storage of VPN credentials
- B. command authorization
- C. one-time passwords
- D. secure deployment of configurations
- E. troubleshooting

Correct: A D

30. What could be a reason to implement Cisco Security Agent?

- A. preventing Day Zero attacks
- B. communicating the host posture validation to a policy server
- C. tracking the Internet usage of employees
- D. validating policy compliance

Correct: A