

Exam : Cisco 350-027

Title : SP Metro Ethernet

Update : Demo

1.What kind of packet is being decoded, using the captured debug mpls l2transport packet data command, below?

```
*Apr 26 16:39:09.092: ATOM imposition: out Etl/0, size 128, EXP 0x0, seq 0, control word 0x0
*Apr 26 16:39:09.092: XX XX XX XX XX XX YY YY YY YY YY YY 88 47 00 01
                        ^^^^^^^^^^^^^^^^^^^^^^^^^^^^^^^^^^^^^^^^^^^^^^^^^^^^^^^^^
                        SA MAC          DA MAC          etype top_shim-->
                                                MPLS
                                                Unic

*Apr 26 16:39:09.092: 00 FF 00 01 01 02 00 00 00 00 03 CC 45 00 00 64
                        ^^^^^^^^^^^^^^^^^^^^^^^^^^^^^^^^^^^^^^^^^^^^^^^^^^^^^^^^^
<--top_shim VC_Label  Ctrl-word  |  | Begins IP Packet
Label=17 Label=16          |  | IP NLPID
S=0      S=1              Control
TTL=255 TTL=2

*Apr 26 16:39:09.092: 04 7A 00 00 FF 01 93 77 0A 0A 07 CC 0A 0A 07 C8
*Apr 26 16:39:09.092: 08 00 80 46 00 09 00 04 00 00 00 00 14 4E E9 A8
*Apr 26 16:39:09.092: AB CD AB CD AB CD AB CD AB CD AB CD AB CD AB CD
*Apr 26 16:39:09.092: AB CD AB CD AB CD AB CD AB CD AB CD AB CD AB CD
*Apr 26 16:39:09.092: AB CD AB CD AB CD AB CD AB CD AB CD AB CD AB CD
*Apr 26 16:39:09.092: AB CD AB CD AB CD AB CD AB CD AB CD AB CD AB CD
```

- A.HDLC
- B.PPP
- C.Ethernet
- D.RFC 2427/RFC1490

Correct:D

2.What Q.931 message cannot be received in response to sending a Q.931 SETUP message?

- A.Alerting
- B.Call Proceeding
- C.Connect
- D.USER Information
- E.Progress

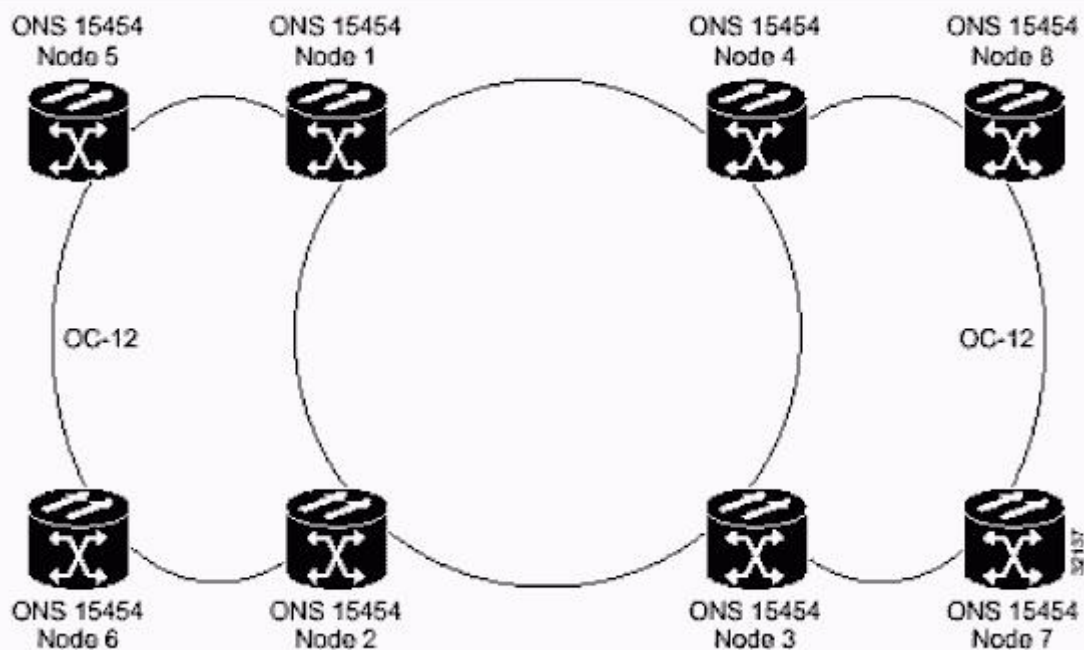
Correct:D

3.The Hold-Down Timer used in Distance Vector protocols:

- A.Sets the time limit of how long a router may keep a packet in its buffer, if the routing protocol is in the process of converging
- B.Determines the number of seconds a router will wait before sending another update to neighbor routers
- C.Sets a specific period for routers to neither accept nor advertise a route from a destination where an original route was recently lost
- D.Sets a duration where routes are not accepted from the neighbor router that caused a routing loop

Correct:C

4.Click the Exhibit button. PE1 and PE2 are connected to the MPLS cloud. All MPLS labels from PE1 and PE2 are working. Observing the shown topology, will this scenario work?



- A. This scenario will not work because Gigabit Ethernet can't be connected to FastEthernet over MPLS.
- B. This scenario will work because the issues concerning Gigabit and FastEthernet over MPLS with default behavior should not make any difference.
- C. This scenario will not work because Gigabit usually has MTU over 9000 and FastEthernet 1500.
- D. This scenario will not work because one side has dot1q header and another side is in port mode.
- E. This scenario will work by configuring PWE Class using the Interworking feature. By default, the MTU on each side is 1500, so this is an acceptable solution.

Correct: E

5. Which do NOT exist?

- A. Per VLAN Spanning Tree (PVST).
- B. Per VLAN Spanning Tree Plus (PVST+).
- C. Per VLAN Spanning Tree Plus Plus (PVST++).
- D. Rapid STP (RSTP).
- E. Resilient STP (RSTP).

Correct: C E

6. Which commands are valid in ethernet or ethernet VLAN attachment circuits?

- A. match cos
- B. match ethernet cos
- C. match source-mac
- D. match vlan
- E. match ethernet multicast

Correct: A D

7. OSPF is defined on a Frame Relay interface providing point-to-multipoint connections. The remote neighbors can reach this central site, but are complaining of routing failures between each of the remote sites. The central router has all the routes for each remote site. Based on this information, what can be diagnosed as the biggest potential problem?

-
- A.An over-subscribed Frame Relay switch will cause some packet loss.
 - B.There are problems in the use of OSPF Authentication.
 - C.There is an incorrect selection of the Designated Router.
 - D.There is an incorrect DLCI assigned on a point-to-point sub-interface.

Correct:C

8.EIGRP applies the principle of Feasible Successor (FS) in resolving a new path to a lost route. What statement regarding the FS is correct?

- A.Information is stored for the FS as part of the Link-State Routing updates forwarded for EIGRP.
- B.EIGRP estimates the FS from each neighbor for each network after an exchange of database information during the normal update process. It uses this information for path selection when a route is lost.
- C.When EIGRP is notified that a route is lost, it will always send requests to each neighbor for ways to reach the lost route. The neighbor that returns the best path will qualify as the FS.
- D.EIGRP nominates a central router as the FS for all lost routes during configuration.

Correct:B

9.What technology allows transporting Layer2 attachment circuits over IP-only backbones?

- A.GRE
- B.AToM
- C.L2TPv3
- D.DLSW+

Correct:C

10.Which are supported ways of transporting ATM over MPLS?

- A.AAL5 SDU VC Mode
- B.AAL5 SDU VP Mode
- C.Packet Cell Relay AAL5 Trunk Mode
- D.Packed Cell Relay Trunk mode
- E.AAL2oMPLS

Correct:A C

11.What IE is not mandatory in a Q.931 Service msg?

- A.Bearer capability
- B.Channel ID
- C.Message Type
- D.Change Status
- E.Call Reference

Correct:A

12.Which statements are true regarding VPLS?

- A.There is a full mesh of pseudowires.
- B.There is a partial mesh of pseudowires.
- C.Only L2TPv3 can be used for pseudowire establishment.
- D.STP runs in the core.
- E.There is split-horizon to avoid loops.

Correct:A E

13.How many bits does TCI contain?

- A.1
- B.3
- C.6
- D.12
- E.16
- F.20

Correct:E

14.What command is used for Interworking configuration?

- A.`interworking {etherner | ip} in interface config mode.
- B.`interworking {etherner | ip} in pseudowire-class config mode.
- C.`Interworking {bridged | routed} in l2tp-class mode.
- D.`{ip | ethernet}Interworking in pseudowire-class config mode.

Correct:B

15.A router is set to boot from flash, but cannot find boot commands in the configuration. Also, valid files do not exist in the default flash device. The router will:

- A.Boot from ROM, since there are no valid sources
- B.Try to boot from the network, using a default filename
- C.Terminate the boot process with an error message
- D.Try to boot from the network, then boot from ROM as a backup

Correct:D

16.What specification defines LACP?

- A.IEEE 802.11
- B.IEEE 802.1q and IEEE 802.1p
- C.IEEE 802.3ad
- D.ITU Q.922
- E.RFC2547

Correct:C

17.Estimating the MTU for EoMPLS Packets Edge MTU of 1500, Transport header, AToM header present, MPLS label, and stack MPLS Label, calculate the core MTU requirements to handle EoMPLS port mode packets.

- A.1518
- B.1520
- C.1524
- D.1526

Correct:D

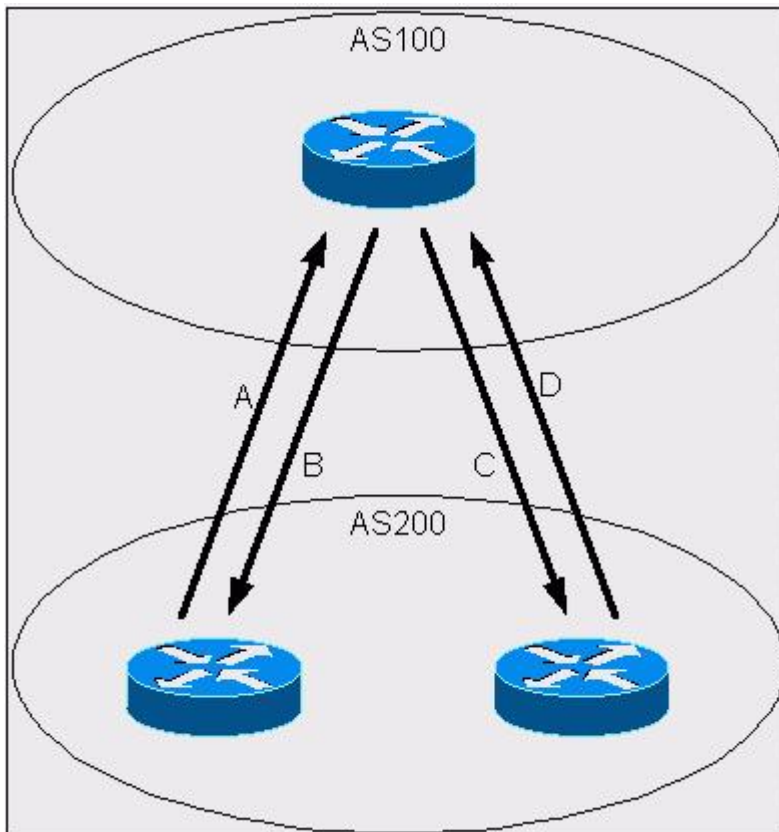
18.What protocol is not disabled by the 'no service tcp-small-servers' command?

- A.Echo
- B.Finger
- C.Chargen
- D.Discard
- E.Daytime

Correct:B

19.Click the Exhibit button to view the topology. According to the diagram, what attribute is

initiated by AS200 (IBGP) to give preference to the path A or D traffic will take when going from AS200 to AS100? What attribute is initiated by AS200 (EBGP) to give preference to the path B or C traffic will take when going from AS100 to AS200?



- A.MED; Origin
- B.MED; Local Preference
- C.Community; Origin
- D.Local Preference; MED
- E.Origin; Community

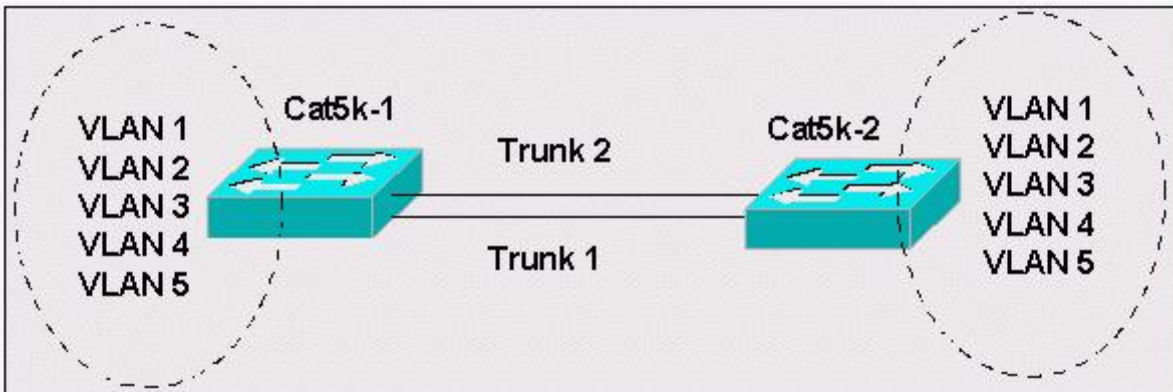
Correct:D

20.Which are components of VPLS?

- A.BGP extensions
- B.Pseudowire technology
- C.LDP extensions
- D.Etherchannel technology
- E.MAC Address learning and forwarding on a virtual port

Correct:A B E

21.Click the Exhibit button to view the topology. Assuming default spanning tree configurations are running between two switches with redundant trunks:



- A. Both trunk 1 and trunk 2 will go into blocking mode to avoid loops.
- B. One trunk will go into blocking mode for all VLANs.
- C. Certain VLANs can be blocked on one trunk and other VLANs on the second trunk.
- D. Both trunks can be in a forwarding state for all VLANs.

Correct: C

22. Click the Exhibit button. Observing the shown configuration, assume PE1 and PE2 already have IP connectivity, what behavior should be expected?

```

PE1
!
l2tp-class ether-xconnect
 authentication
  hostname R3
  password 7 110A1016141D
  cookie size 4
!
pseudowire-class Ethernet_Over_L2TPv3
 encapsulation l2tpv3
 sequencing both
 protocol l2tpv3 ether-xconnect
 ip local interface Loopback0
!
crypto ipsec transform-set trvpn esp-des esp-md5-hmac
!
crypto map combines 20 ipsec-isakmp
 description Encrypt L2VPN
 set peer 2.2.2.2
 set transform-set trvpn
 match address 106
!
interface Loopback0
 ip address 1.1.1.1 255.255.255.255
!
interface serial 0/0
 ip address 207.67.1.1 255.255.255.0
 crypto map combines
!
interface Ethernet0/0
 xconnect 2.2.2.2 100 pw-class Ethernet_Over_L2TPv3
!
access-list 106 permit 106 any any log

```

```

PE2
!
l2tp-class ether-xconnect
 authentication
  hostname R3
  password 7 110A1016141D
  cookie size 4
!
pseudowire-class Ethernet_Over_L2TPv3
 encapsulation l2tpv3
 sequencing both
 protocol l2tpv3 ether-xconnect
 ip local interface Loopback0
!
crypto ipsec transform-set trvpn esp-des esp-md5-hmac
!
crypto map combines 20 ipsec-isakmp
 description Encrypt L2VPN
 set peer 1.1.1.1
 set transform-set trvpn
 match address 106
!
interface Loopback0
 ip address 2.2.2.2 255.255.255.255
!
interface serial 0/0
 ip address 207.67.1.2 255.255.255.0
 crypto map combines
!
interface Ethernet0/0
 xconnect 1.1.1.1 100 pw-class Ethernet_Over_L2TPv3
!
access-list 106 permit 106 any any log

```

- A. This configuration is valid. L2TPv3 will come up and CE1 will be able to communicate with CE2.
- B. This is not a valid design because Crypto does not have any relationship to L2TPv3.
- C. The configuration will not work for L2TPv3 because to work it would require MPLS to be enabled in the

core.

D.L2TPv3 will not come up and Crypto IPsec will not come up either because there is a misconfigured protocol type for L2TPv3.

E.This will not work because Crypto is misconfigured on PE1 and PE2.

F.This will not work because it is not possible to encrypt L2TPv3 session in IPsec.

Correct:D

23.What is NOT true regarding PW QoS?

A.A policy action can be applied for packets matched by DLCI.

B.LLQ can be applied to traffic classified per COS on ethernet AC.

C.CB-WFQ can be applied to traffic classified per COS on ethernet AC.

D.The command `set cos' is used to modify the .1p cos bits in a policy.

E.The command `set vlan' is used to modify the VLAN tag in a policy.

F.All of the above

Correct:E

24.Click the Exhibit button. By executing the shown command, calculate a cookie size used in this session.

Match the compatible concepts in SONET and SDH terminology.

(place here)	Regenerator Section	Line
(place here)	Multiplex Section	Section
(place here)	Administrative Unit or Administrative Unit Group	Virtual Tributary
(place here)	Transmission Unit Group	Virtual Tributary Group
(place here)	Transmission Group	Synchronous Payload Envelope

A.16

B.4

C.8

D.32

Correct:C

25.What QoS mechanism is used and supported with EoMPLS?

A.802.1s

B.802.1d

C.802.1p

D.802.1w

E.802.1q

Correct:C

26. Within OSPF, what functionality best defines the use of a 'stub' area?

- A. It appears only on remote areas to provide connectivity to the OSPF backbone.
- B. It is used to inject the default route for OSPF.
- C. It uses the no-summary keyword to explicitly block external routes, defines the non-transit area, and uses the default route to reach external networks.
- D. It is a non-transit area that does not allow flooding of external networks and uses the default route to reach external networks.

Correct: D

27. An incoming frame is received by a transparent bridge. If the destination address of the frame is not present in the database, the bridge will:

- A. Discard the frame
- B. Send out the frame on all interfaces, except on the interface where the frame originates
- C. Put the destination MAC address in the table
- D. Broadcast the frame on all interfaces
- E. None of the above

Correct: B

28. When using IS-IS for IP routing, Dual IS-IS defined by RFC 1195, what is true? (multiple answer)

- A. It is necessary to configure a NSAP address.
- B. It is not possible to perform both IP and CLNS routing with the same process.
- C. IP address and subnet information is carried in the TLV field on the L-1/L-1 LSPs.
- D. Dual IS-IS does not support VLSM information.

Correct: A C

29. Traceroute does not work on Host A (a Unix workstation) to the Internet. Currently, there is an inbound access-list applied to the serial interface on Router 1 that says "access-list 101 permit tcp any any". What access-list entry may need to be added in order to get traceroute to work?

- A. access-list 101 permit udp any any
- B. access-list 101 permit icmp any any time-exceeded access-list 101 permit icmp any any port-unreachable
- C. access-list 101 permit icmp any any time-exceeded access-list 101 permit icmp any any net-unreachable
- D. access-list 101 permit icmp any any echo access-list 101 permit icmp any any net-unreachable
- E. access-list 101 permit udp any any access-list 101 permit icmp any any protocol-unreachable

Correct: B

30. Observing the output below from the PE router, select what path EoMPLS will take before exiting a router: PE#show mpls l2transport vc 100 detail Local interface: Fa0/0.1 up, line protocol up, Eth VLAN 100 up Destination address: 172.0.0.3, VC ID: 100, VC status: up Preferred path: Tunnel1, active Default path: disabled Tunnel label: 3, next hop point2point Output interface: Tu1, imposed label stack {27 20} Create time: 00:07:11, last status change time: 00:07:11 Signaling protocol: LDP, peer 172.0.0.3:0 up MPLS VC labels: local 16, remote 20 Group ID: local 0, remote 0 MTU: local 1500, remote 1500 Remote interface description: Sequencing: receive disabled, send disabled

- A. 172.0.0.3
- B. FastEthernet 0/0

-
- C.FastEthernet 0/0.1
 - D.Tunnel1
 - E.This is an invalid output
- Correct:D**