

**Exam : Cisco 350-020**

**Title : CCIE SP Optical Qualification  
Exam**

**Update : Demo**

1. What IE is not mandatory in a Q.931 Service msg?

- A. Bearer capability
- B. Channel ID
- C. Message Type
- D. Change Status
- E. Call Reference

**Correct: A**

2. The purpose of Administrative Distance, as used by Cisco routers, is:

- A. To choose between routes from different routing protocols when receiving updates for the same network
- B. To identify which routing protocol forwarded the update
- C. To define the distance to the destination used in deciding the best path
- D. To be used only for administrative purposes

**Correct: A**

3. What is the maximum PMD value of a 100km fiber segment if the cable is specified with 0.5ps/km ? (worst case)?

- A. 0.005ps
- B. .05ps
- C. 5ps
- D. 50ps
- E. 500ps

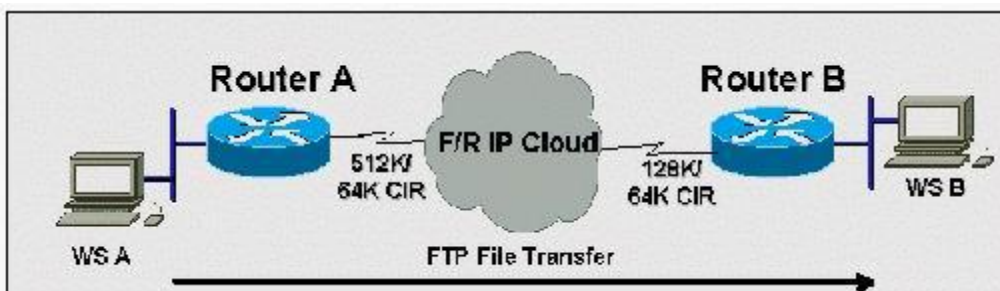
**Correct: C**

4. What is the equivalent of 50 GHz spacing in DWDM in terms of nm?

- A. 1.6 nm
- B. 0.8 nm
- C. 0.4 nm
- D. 0.2 nm

**Correct: C**

5. Click the Exhibit to view the topology. Router A has a 512K-access port into the frame relay cloud. Router B has 128K-access port into the frame relay cloud. The two routers are connected with symmetrical PVCs that are configured for 64K committed information rate (CIR). What Frame Relay Traffic Shaping map-class sub-command should be entered on Router A to prevent workstation A from overrunning the access port on Router B?



A. frame-relay traffic-rate 128000 512000

B. frame-relay traffic-rate 64000 512000

- 
- C.frame-relay traffic-rate 512000 64000
  - D.frame-relay traffic-rate 128000 64000
  - E.frame-relay traffic-rate 64000 128000

**Correct:E**

**6.If a host sends a TCP segment with the RST flag set, it means:**

- A.The receiver should send all data in the reassembly buffer to the application receiving it immediately.
- B.The receiver should reset the session.
- C.Any routers between the source and destination hosts should reset the state of the connection in their buffers.
- D.The receiver should make certain its send buffer is pushed onto the wire.

**Correct:B**

**7.How many E1 channels can STM-1 frame transport?**

- A.7
- B.21
- C.63
- D.84

**Correct:C**

**8.BGP can implement a policy of 'Route Dampening' to control route instability. What statement about route dampening is NOT correct?**

- A.A numeric penalty is applied to a route each time it flaps.
- B.The penalty is exponentially decayed according to parameters, such as half-life-time.
- C.The history of unstable routes is forwarded back to the sender to control future updates.
- D.The route is eventually suppressed based on a configurable 'suppress limit'.

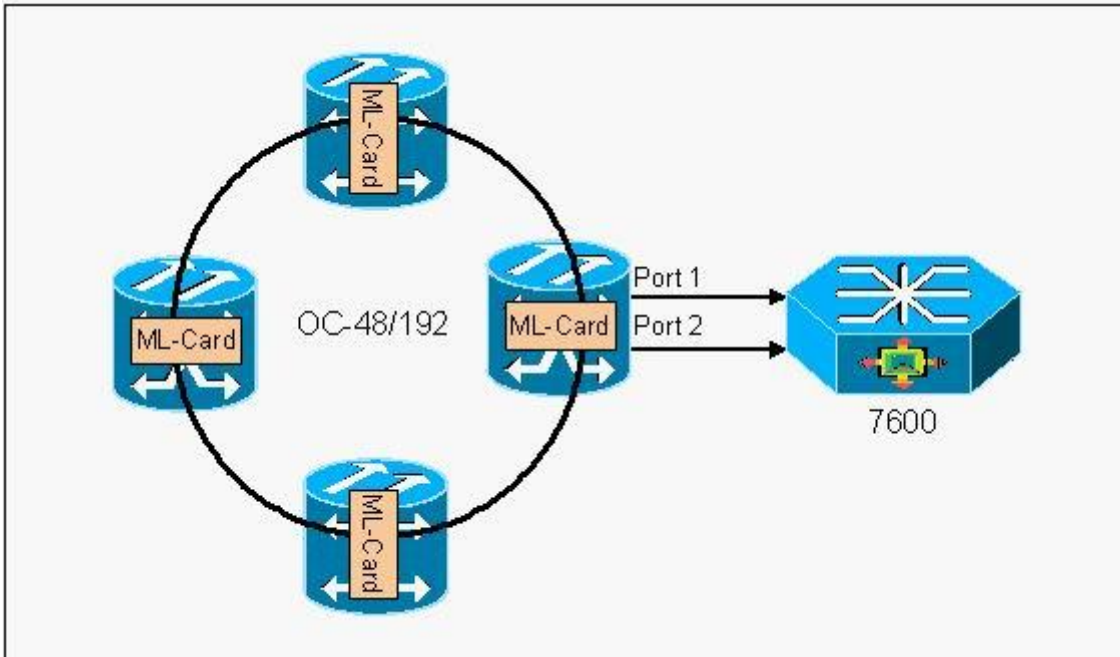
**Correct:C**

**9.MPLS traffic engineering data is carried by:**

- A.Opaque LSAs or IS-IS TLVs
- B.BGP MEDs
- C.RTP or RTCP packets
- D.MBGP

**Correct:A**

**10.Click the Exhibit button. In the diagram, if a resilient packet ring (RPR) is built between ML-series cards, \_\_\_ restoration exists on the ring, while the redundant connections to the 7609 rely on \_\_\_ protection.**



- A.50 ms, STP
- B.STP, STP
- C.STP, 1+1 APS
- D.50ms, 50ms

**Correct:A**

**11.How many E-1s can be aggregated (maximum) and mapped into a VC-12 Signal?**

- A.1
- B.7
- C.14
- D.28
- E.32

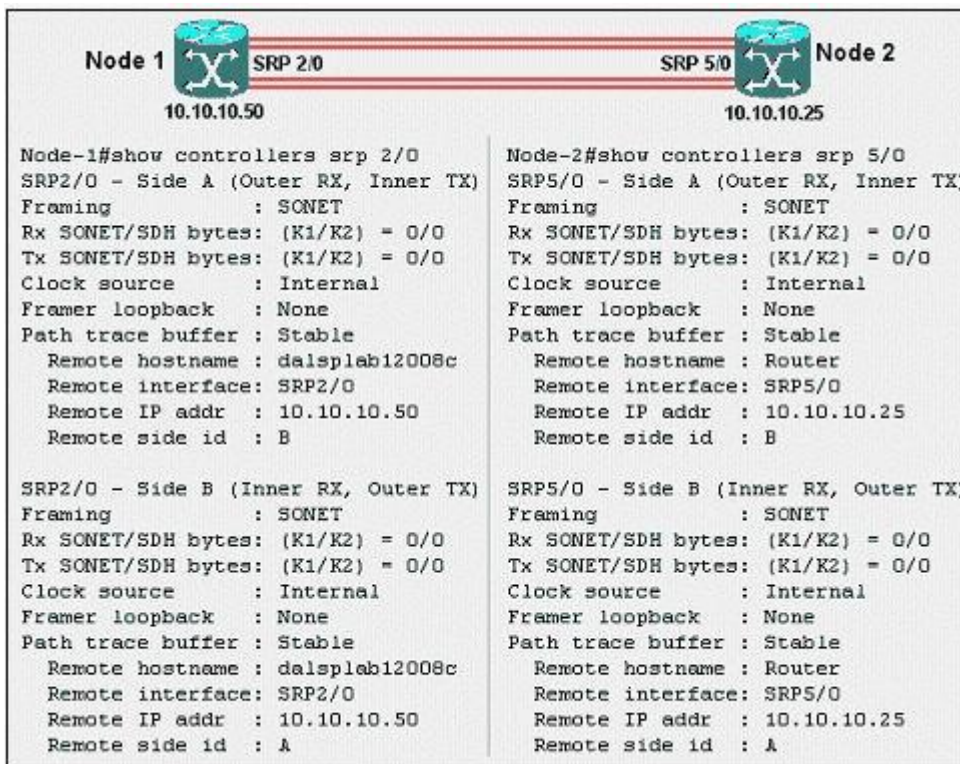
**Correct:A**

**12.What is Fast EtherChannel?**

- A.A feature to bundle multiple Ethernet point-to-point links quickly into one logical high speed link
- B.A feature to bundle multiple Fast-Ethernet point-to-point links into one logical high speed link
- C.Another name for full-duplex Fast Ethernet
- D.Another name for Gigabit Ethernet
- E.None of the above

**Correct:B**

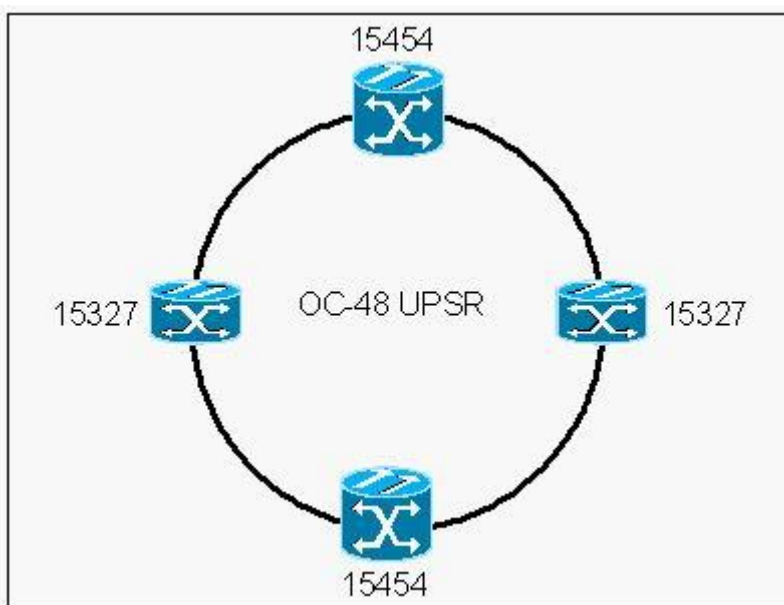
**13.Click the Exhibit button. A customer has improperly installed a 2-node OC-12 SRP ring using dark fiber. Based on the printout from each node shown in the exhibit, what is the problem?**



- A. Misconfigured timing
- B. Single faulty span or fiber between nodes
- C. A-B side SRP interfaces are fiber-looped on each node
- D. A-B side TX-TX and RX-RX fibers connected between nodes
- E. A-A and B-B side SRP interfaces connected between nodes

**Correct: C**

**14. Click the Exhibit button. Which are the two possible circuit sizes for an E-series shared packet ring in the network shown in the exhibit?**



- A. STS-1

- B.STS-3c
- C.STS-6c
- D.STS-9c
- E.STS-12c

**Correct:A B**

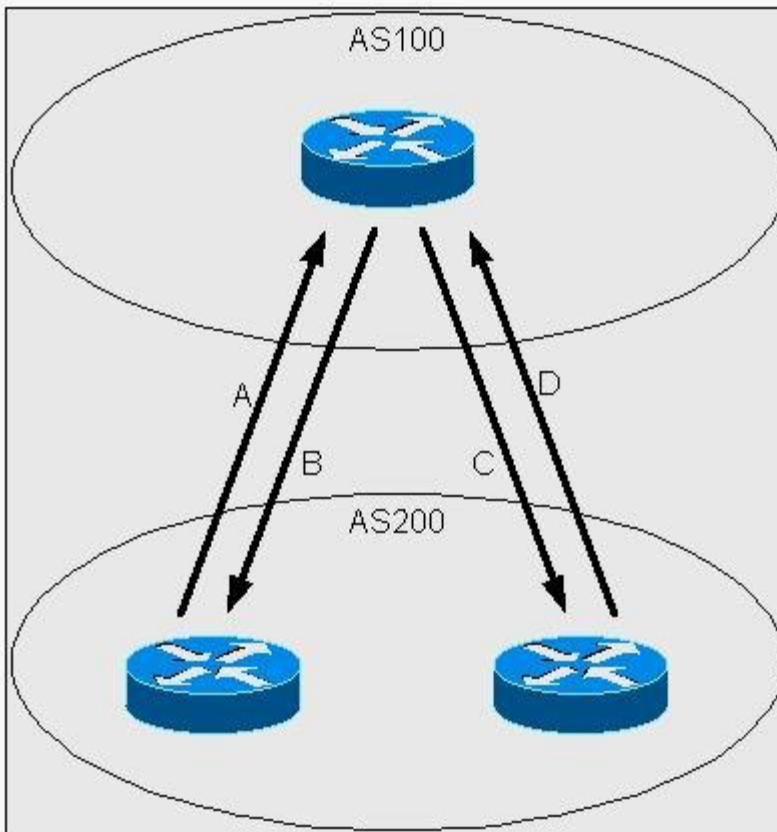
**15.Click the Exhibit button to view the configuration. Upon deleting an IOS image file from flash, an execution of show flash shows the file still in flash, with a 'D' preceding it (as shown in the exhibit). What step must be taken in order to remove the file completely?**

```
stllab-8510>sh bootflash
-#- ED --type-- --crc--- -seek-- nlen -length- -----date/time----- name
1  .. unknown 9DA13DA5 3576AC 31 3241516 Aug 22 1998 08:34:22 cat8510c-in
2  .D unknown 8CDE134F 453BA3 22 2494584 Jul 20 1997 09:33:02 cat8510b-in
```

- A.Erase the file from flash
- B.Format the flash device
- C.Replace the flash card - it is defective
- D.Execute a squeeze command on the flash device

**Correct:D**

**16.Click the Exhibit button to view the topology. According to the diagram, what attribute is initiated by AS200 (IBGP) to give preference to the path A or D traffic will take when going from AS200 to AS100 . What attribute is initiated by AS200 (EBGP) to give preference to the path B or C traffic will take when going from AS100 to AS200?**



- A.MED; Origin
- B.MED; Local Preference
- C.Community; Origin
- D.Local Preference; MED
- E.Origin; Community

**Correct:D**

**17.Which three events might you diagnose as the cause of a line switching event?**

- A.Loss of signal and frame
- B.Line AIS (all ones in STS pointer)
- C.Routine exercises
- D.Excessive signaling messages
- E.Excessive bit errors in overhead
- F.Switched photon elements

**Correct:A B E**

**18.While entering commands on a console, the break key is pressed accidentally and the router reboots. What action could disable this problem?**

- A.In configuration mode, enter disable break.
- B.In configuration mode, enter no service break.
- C.Change the configuration register.
- D.Replace the router - this is an invalid response to pressing the break key when past 60 seconds after boot.

**Correct:C**

---

**19.What is NOT an ATM class of service?**

- A.CBR
- B.VBR-t
- C.ABR
- D.UBR
- E.CAR

**Correct:E**

**20.What describes a technique, used to encapsulate voice (NOT data) over ATM?**

- A.RFC 1483
- B.LANE
- C.AAL-1
- D.RFC 1577

**Correct:C**

**21.What is the transmission limitation on a single 1550 nm signal, at OC-192 bit-rate, over certified SMF-28 fiber using no dispersion compensation?**

- A.Four-wave mixing
- B.Polarization-mode dispersion
- C.Chromatic dispersion
- D.Attenuation

**Correct:C**

**22.In BGP, why should a Route Reflector be used?**

- A.To overcome issues of split-horizon within BGP
- B.To reduce the number of External BGP peers by allowing updates to 'reflect' without the need to be fully meshed
- C.To allow the router to 'reflect' updates from one Internal BGP speaker to another without the need to be fully meshed
- D.To divide Autonomous Systems into mini-Autonomous Systems, allowing the reduction in the number of peers
- E.None of the above

**Correct:C**

**23.What statement is true concerning SDH?**

- A.To manage an SDH network, an optical service channel in the ADM is required.
- B.An STM-16 signal equates to 10Gbit/s.
- C.Orderwire provides a 64kbps voice channel for communication between RSTEs.
- D.All SDH network elements must have optical interfaces.

**Correct:C**

**24.What is true about the DLCI field in the Frame Relay header?**

- A.It consists of two portions, source and destination, which map data to a logical channel.
- B.It generally has significance only between the local switch and the DTE device.
- C.It is an optional field in the ITU-T specification.
- D.It is present only in data frames sent through the network.

**Correct:B**

**25.Where is there a major difference between SONET and SDH?**

- 
- A. Interpretation of Overhead
  - B. Regeneration
  - C. Multiplexing
  - D. Optical line bit rates
  - E. Ring topologies supported

**Correct: A C**

**26. EIGRP applies the principle of Feasible Successor (FS) in resolving a new path to a lost route. What statement regarding the FS is correct?**

- A. Information is stored for the FS as part of the Link-State Routing updates forwarded for EIGRP.
- B. EIGRP estimates the FS from each neighbor for each network after an exchange of database information during the normal update process. It uses this information for path selection when a route is lost.
- C. When EIGRP is notified that a route is lost, it will always send requests to each neighbor for ways to reach the lost route. The neighbor that returns the best path will qualify as the FS.
- D. EIGRP nominates a central router as the FS for all lost routes during configuration.

**Correct: B**

**27. If the PMD coefficient of a given fiber is 4 ps and the distance under consideration is 625Km calculate the effect of dispersion (differential group delay) due to PMD.**

- A. 100ps
- B. 200ps
- C. 50ps
- D. 150ps

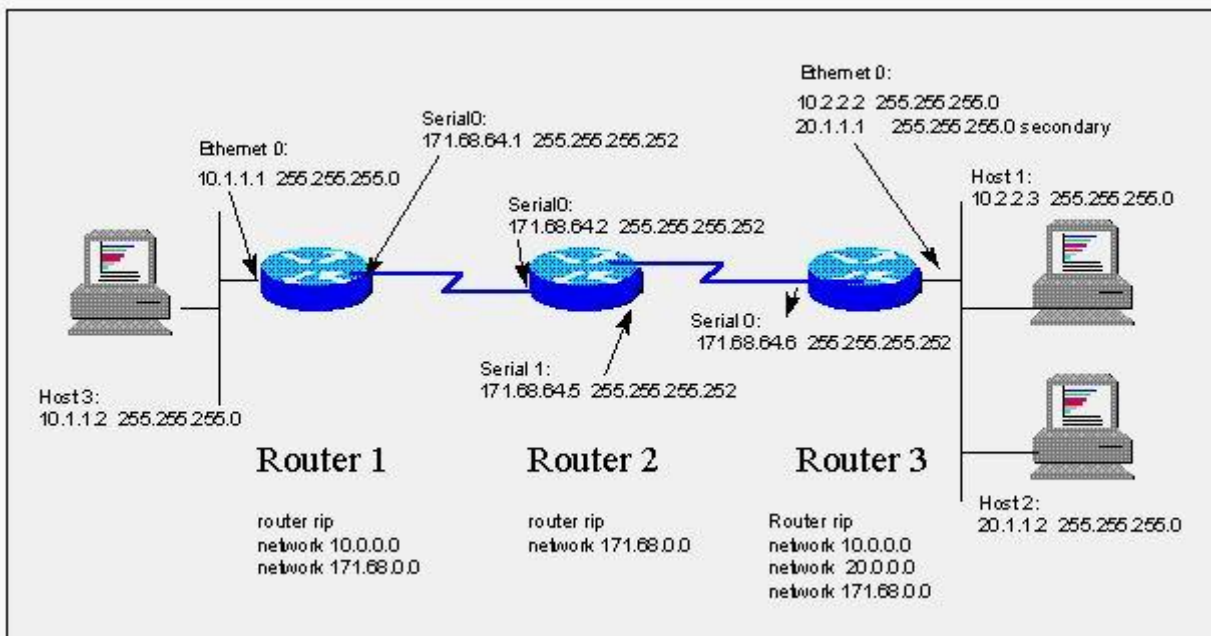
**Correct: A**

**28. What is the correct relative switching priority in a BLSR ring (higher to lower)?**

- A. Protection Lockout, Manual Switch, Forced Switch
- B. Forced Switch, Manual Switch, Signal Degrade
- C. Signal Fail, Signal Degrade, Manual Switch
- D. Protection Lockout, Manual Switch, Path AIS
- E. Signal Degrade, Signal Fail, Manual Switch

**Correct: C**

**29. Click the Exhibit button to view the topology. With RIP running, what command would be used to set the default route on Router 2 to 171.68.64.6 (Router 3)?**



- A. ip default-network 171.68.64.6
- B. ip route 0.0.0.0 255.255.255.255 171.68.64.6
- C. ip route 0.0.0.0 0.0.0.0 171.68.64.6
- D. None of the above

**Correct: C**

**30. Telcordia has defined national ISDN, which is basically within the construct of Q.931 protocol with some modifications. If National ISDN requires a new information element (IE), how will this need be handled?**

- A. No new IE can be defined by standard bodies other than ITU-T; therefore, Telcordia must pass the information in open fields of existing IE.
- B. Telcordia has to define a new codeset (CS) 0 IE.
- C. Telcordia should define a new CS7 IE
- D. Telcordia should define a new CS5 IE
- E. Use CS8 IE

**Correct: D**