

**Exam : Lotus 050-895**

**Title :** Novell eDirectory Design and  
Implementation:eDirectory8.8

**Update :** Demo

1. Which replica type contains only the partition root object?

- A. Master
- B. Read-only
- C. Read/write
- D. Filtered replica
- E. Subordinate reference

Correct: E

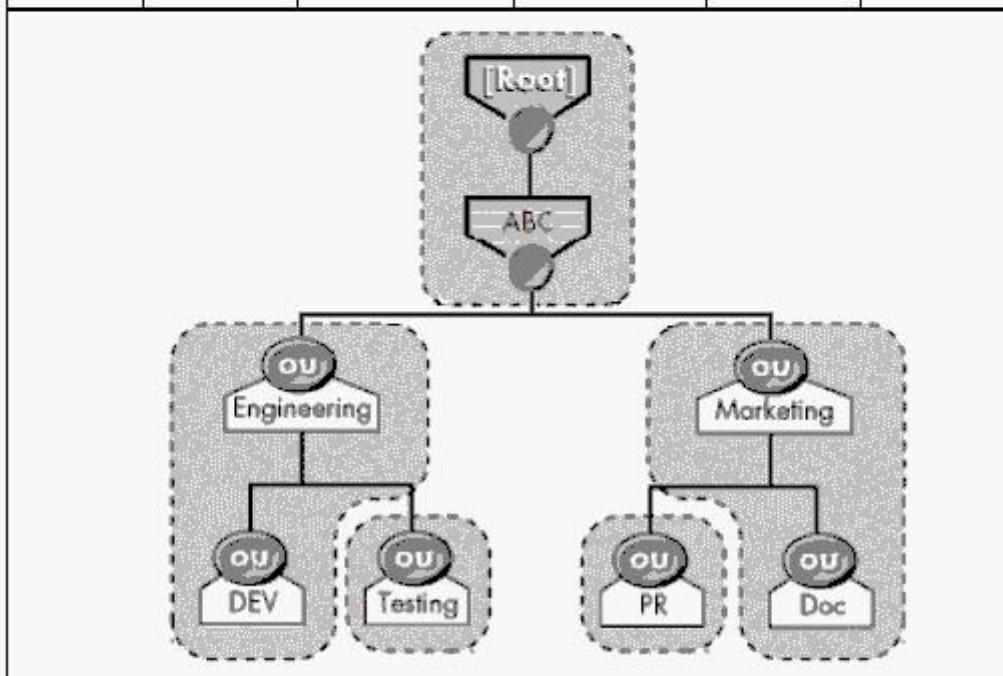
2. Which statements are true regarding the placement of eDirectory objects? (Choose 2.)

- A. Place application objects in their own container.
- B. Don't place user objects near the top of the tree.
- C. If possible, don't place objects deep within a tree.
- D. If possible, don't place server objects within the same container.
- E. Server objects should be placed near the user objects they are servicing.

Correct: C E

3. Examine the exhibit by clicking the Exhibit button. How many subordinate references will exist in this tree?

Server	[Root]	Engineering	Marketing	Testing	PR
Serv1	Master	Master	Master	Master	Master
Serv2	R/W		R/W		
Serv3		R/W		R/W	
Serv4	R/W				R/W
Serv5	R/W		R/W		
Serv6	R/W	R/W			



- 
- A.3
  - B.5
  - C.6
  - D.7
  - E.8
  - F.9
  - G.12

**Correct:E**

**4.Which of the following is most important to consider when designing the upper layers of an eDirectory tree?**

- A.Time synchronization strategy
- B.Number of objects in the tree
- C.Number of servers in the tree
- D.Physical network infrastructure
- E.Number of partitions and replicas

**Correct:D**

**5.What is the most important design consideration when designing the upper layers of an eDirectory tree?**

- A.Partition and replica plan
- B.Time synchronization strategy
- C.Number of objects in the tree
- D.Number of servers in the tree
- E.Physical network infrastructure

**Correct:E**

**6.What is a part of analyzing user needs when creating an accessibility needs analysis document?**

- A.Design a strategy for mobile users.
- B.Specify ZENworks object configurations.
- C.Specify security rights to particular objects.
- D.Gather information related to physical network resource needs.
- E.Create guidelines that determine how eDirectory objects are used to create the user environment.

**Correct:D**

**7.What tasks are helpful in completing a needs analysis when designing an eDirectory tree? (Choose 2.)**

- A.Gather information about network connectivity
- B.Gather information about resources that users access
- C.Gather information to decide on a replica placement strategy
- D.Gather information to estimate the time for each phase of design
- E.Gather information to decide which server should be the time provider

**Correct:A B**

**8.Which statement is true about eDirectory partitions?**

- A.Partitions can overlap each other.
- B.A container object can reside in 2 partitions.
- C.A partition provides fault tolerance for the file system.

---

D.Partitions are logical divisions of eDirectory that enable the database to be divided among several servers.

**Correct:D**

**9.Which statement is true regarding the Priority Sync feature?**

- A.Priority Sync is supported only between two or more eDirectory 8.8 servers hosting any partition.
- B.Priority Sync is supported only between two or more eDirectory 8.8 servers hosting the root partition.
- C.Priority Sync is supported only between two or more eDirectory 8.8 servers hosting the same partition.
- D.Priority Sync is supported only between two or more eDirectory 8.8 servers hosting parent or child partitions.

**Correct:C**

**10.Which statement is true regarding the function-based design for the upper layers of your eDirectory tree?**

- A.It is the best design type to handle future growth.
- B.It should be used if there is a WAN in the network.
- C.It is best for small networks that do not span more than one location.
- D.It is a more difficult type of design for the upper layers of your tree.
- E.It should be used if there are multiple organization objects in the tree.

**Correct:C**

**11.You have just created an eDirectory tree and installed 3 servers into the tree. The tree has one partition. Server1, Server2, and Server3 were installed into the Corp container. Server2 crashed and you removed it from the tree before you installed additional servers. The additional servers installed in the tree were Server4, Server5, Server6, and Server7. Server4 and Server5 were installed into the Prod container. Server6 and Server7 were installed into the Acct container. The Corp, Prod, and Acct containers are children of the tree root. The servers were placed in the tree in the following order: Server4, Server5, Server6, Server7. You haven't had the chance to manually add replicas to any server. Which servers hold replicas?**

- A.Server1 and Server3
- B.Server1, Server3, and Server4
- C.Server1, Server3, Server4, and Server6
- D.Server1, Server3, Server4, and Server5
- E.Server1, Server3, Server6, and Server7
- F.Server1, Server3, Server4, Server5, Server6, and Server7

**Correct:B**

**12.When developing a User Environment plan, what is the next step after you create a User Accessibility Needs document?**

- A.Design the lower layers of the eDirectory tree
- B.Design the upper layers of the eDirectory tree
- C.Create an Administrative Strategies document
- D.Create an Accessibilities Guidelines document
- E.Create an eDirectory Naming Standards document

**Correct:D**

**13.When designing the upper layers of the eDirectory tree, the location-based design should generally be used when the network spans more than one building or location. Which are**

**exceptions of using a location-based design? (Choose 2.)**

- A.The majority of printers are at one location.
- B.There are high speed and highly reliable WAN lines.
- C.The servers at remote locations hold only one replica.
- D.The servers at other locations are secondary time servers.
- E.The network exists at one location and there are no plans to expand to other locations.

**Correct: B E**

**14.You are the network administrator for your company and are designing the upper layers of your eDirectory tree. There are 2500 users and 30 servers located at 5 sites connected by a WAN. Which design is ideal for this type of network?**

- A.Function-based design
- B.Location-based design
- C.Combination-based design
- D.Single organizational unit-based design

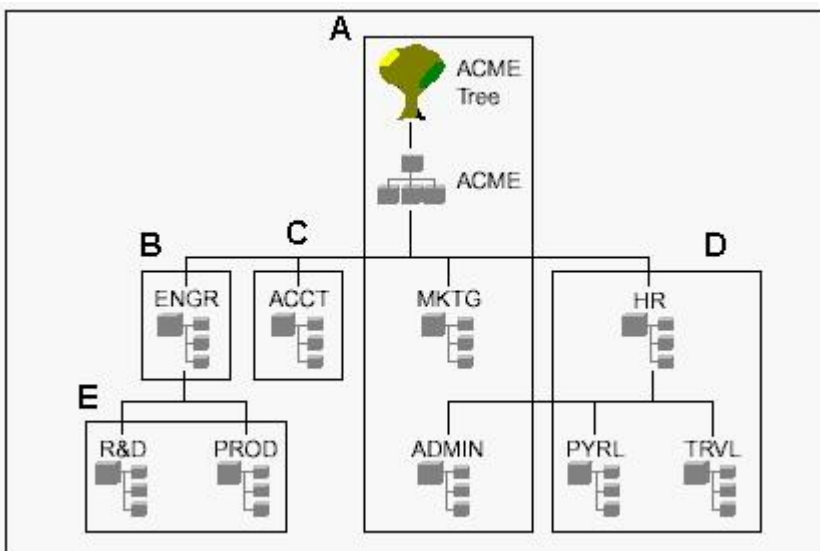
**Correct: B**

**15.Which is an advantage of having only one organization object in the tree?**

- A.It allows the tree to need only one partition.
- B.It provides easier implementation of time synchronization.
- C.It meets the requirement of one organization object per [Root] object.
- D.It allows for more efficient partition synchronization between servers.
- E.It allows for the configuration of changes that apply to the whole company from one location.

**Correct: E**

**16.Begin by clicking the Exhibit button. What partitions have incorrect partition boundaries?**



- A.Partitions A and D
- B.Partitions D and E
- C.Partitions A and B
- D.Partitions A, D, and E
- E.Partitions B, C, and E
- F.Partitions A, B, and C

**Correct:D**

17. Perform the following drag-and-drop task. Begin by clicking the Drag-and-Drop button. When you finish, continue to the next question by clicking the Next button. Listed are administrator roles and their characteristics. Drag the administrator role to its characteristic.

Administrator Roles	Characteristics	
Enterprise-Wide Administrator	place here	Supervisor rights to Organizational Unit objects
Server Administrator	place here	Supervisor right to the root of each volume
Backup Administrator	place here	Supervisor right to the [Root] object
Container Administrator	place here	No file system rights
Functional Administrator	place here	Supervisor rights to only the Public, Users, and Apps directories

**Correct:**

Green choice4---->Yellow Choice1

Green choice3---->Yellow Choice2

Green choice1---->Yellow Choice3

Green choice5---->Yellow Choice4

Green choice2---->Yellow Choice5

18. Which protocol allows users on TCP/IP networks to dynamically discover available network services?

- A. SAP
- B. SLP
- C. RIP
- D. NTP
- E. DHCP

**Correct:B**

19. Which are characteristics of the Service Agent (SA) when referring to the Service Location Protocol? (Choose 2.)

- A. Network servers load SAs by default.
- B. SAs are primarily intended for smaller networks.
- C. SAs request service locations from the User Agent (UA).
- D. Directory Agents request service locations from SAs.
- E. SAs maintain a record of all services advertised by the Directory Agent (DA).

**Correct:A B**

20. What is the role of the server administrator when going through the eDirectory design and implementation process?

- A. To identify training needs
- B. To design eDirectory security
- C. To plan server placement in the tree

- D.To formulate a strategy for partition and replication
- E.To determine the use of single or multiple protocols on the network

**Correct:C**

**21.As the project lead for your company's eDirectory design and implementation project, you have been following the eDirectory design cycle. You have completed the procedures in the project approach phase and the design phase. As you continue through the eDirectory design cycle, which procedure still needs to be completed?**

- A.Setting login script standards
- B.Designing the lower layers of the tree
- C.Planning a time synchronization strategy
- D.Setting a standard for eDirectory object names
- E.Determining a partition and replica placement strategy

**Correct:C**

**22.Which statement is true about eDirectory partitions?**

- A.Partitions can overlap each other.
- B.A container object can reside in 2 partitions.
- C.A partition is a physical copy of the Directory.
- D.An eDirectory object can only exist in one partition.

**Correct:D**

**23.What is the first step when creating a user environment plan?**

- A.Create a project group
- B.Create accessibility guidelines
- C.Design an administrative strategy
- D.Create a User Accessibility Needs document

**Correct:D**

**24.You are the network administrator for your company and you are in charge of your company's eDirectory design and implementation project. You have completed the project approach phase of the eDirectory design cycle. Which tasks still need to be completed before you begin the implementation phase? (Choose 2.)**

- A.Fine-tune the eDirectory design
- B.Plan a time synchronization strategy
- C.Determine a partition and replica strategy
- D.Gather business information related to network design
- E.Design the upper and lower layers of the eDirectory tree

**Correct:C E**

**25.Which replica or replicas contain a complete copy of all object information of a partition?**

- A.Master
- B.Master and filtered
- C.Master and read/only
- D.Master and read/write
- E.Master,read/write, and read-only
- F.Master, read/write, and filtered
- G.Master, read/write, read-only, and subordinate reference

---

**Correct:E**

**26.You are doing an initial eDirectory installation on a NetWare server that has SYS and USER volumes mounted. There are also 3 printers on the network. Which objects are created during an initial eDirectory installation? (Choose 3.)**

- A.Admin object
- B.Group object
- C.Printer objects
- D.Volume file object
- E.Organizational container object

**Correct:A D E**

**27.You are the project lead of your company's eDirectory design and implementation effort. Your company is installing 10 NetWare 5 servers. You are getting ready to design the eDirectory tree. In accordance with the eDirectory design cycle, which tasks should you complete before you design the eDirectory tree? (Choose 2.)**

- A.Plan the user environment
- B.Determine replica placement of servers
- C.Determine the scope of the design process
- D.Set a standard for eDirectory names and values
- E.Gather business information related to network design

**Correct:C E**

**28.When going through the eDirectory design and implementation process, whose role is it to combine the eDirectory tree design with the organization's disaster recovery strategy?**

- A.Project manager
- B.Security developers
- C.Server administrator
- D.Connectivity specialist
- E.eDirectory administrator

**Correct:C**

**29.In which file do you configure time on a Linux server?**

- A.ntp.conf
- B.init.conf
- C.time.conf
- D.tsync.conf
- E.clock.conf

**Correct:A**

**30.Without considering hardware limitations for a pure eDirectory environment, what is the eDirectory limit for the number of objects that you can put in a container?**

- A.1,000
- B.3,500
- C.5,000
- D.10,000
- E.100,000
- F.1,000,000

---

G.No limit  
**Correct:G**