

Exam : **000-015**

Title : IBM Maximo Asset
Management V7.1
Implementation

Version : Demo

1. Which applications record the history of attribute changes made on the Specifications tab, without having to use e-Audit as defined in Database Configuration?

- A.Asset, Configuration Item
- B.Job Plan, Ticket Template
- C.Item Master, Service Item, Tool, Job Plan
- D.Asset, Location, Item Master, Service Item, Tool

Answer: A

2. The appropriate status to invoke a Preventive Maintenance (PM) alert has been determined to be in the Organization application.

What is the Select Action menu item where this can be set?

- A.PM options
- B.Asset options
- C.System settings
- D.Work Order options

Answer: A

3. What is the purpose of a Condition Rate?

- A.to create alternate paths in Workflows
- B.to assign relative values to inventory items
- C.to assign values to personnel for labor purposes
- D.to indicate the costs associated with inventory items

Answer: B

4. When creating a purchase contract, what is the purpose of checking the Change Price on Use field?

- A.It specifies that the price in the purchase order (PO) is only an estimated price.
- B.It specifies that when a PO is issued against this contract, the price must be changed.
- C.It specifies that the price of a given related item can be changed on related POs or purchase requests.
- D.It specifies that the price of a given item specified in the Master Contract is reduced or increased, based on market conditions.

Answer: C

5. When can Material Receipts be changed if inspection is not required?

- A.prior to saving the Receipt Line
- B.prior to inspecting the Receipt Line
- C.prior to approving the Receipt Line
- D.prior to completing the Receipt Line

Answer: A

6. What is a Failure Code hierarchy?

- A.Problem, Cause, Remedy hierarchy based on a Work Classification
- B.Problem, Cause, Remedy hierarchy based on an Asset Classification
- C.Problem, Cause, Remedy hierarchy based on a Failure Classification
- D.Problem, Cause, Remedy hierarchy based on a Location Classification

Answer: C

7. Where are Ticket Templates used?

- A.Work Requests
- B.Service Requests
- C.Desktop Requisitions
- D.Work Order Tracking

Answer: B

8. Which three objects have rotating records? (Choose three.)

- A.Person
- B.Assets
- C.Locations
- D.Job Plans
- E.Item Master
- F.Service Items

Answer: BCE

9. Which item type(s) can be used as a rotating item on both an Asset and a Location?

- A.Item only
- B.Item and Tool only
- C.Item, Service Item, Tool
- D.Item and Service Item only

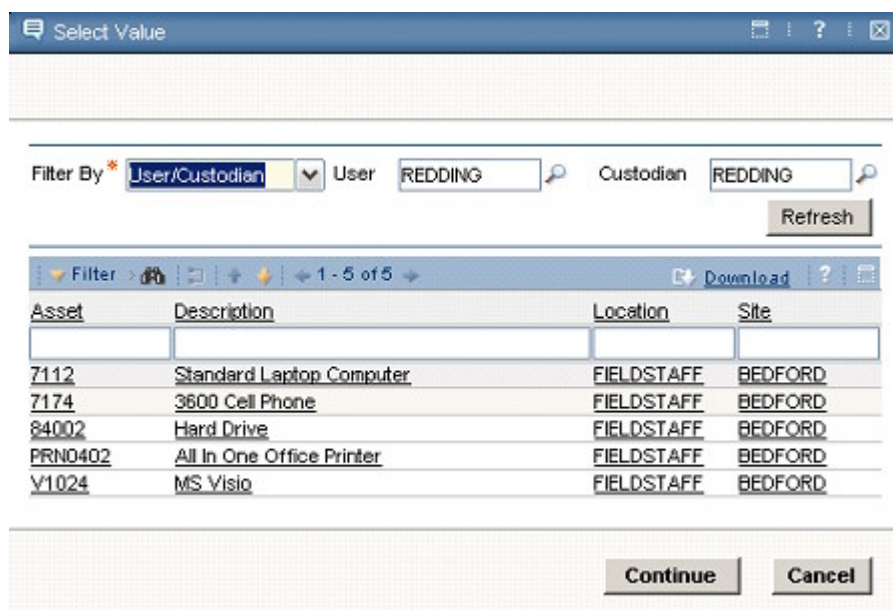
Answer: B

10. Click the Exhibit button.

The diagram in the exhibit shows a dialog box that opens when the Select Value option is selected from the Asset or Location field on a Service Request. The Filter By field has three options User/Custodian, Public and All.

In which application can the default for this field be changed?

- A.Organizations
- B.Service Requests
- C.Application Designer
- D.Database Configuration



Answer: D

11. Which statement is true about the Users and Custodians functionality?

A.Users and Custodians can be created for Assets. A User is someone who uses the Asset. A Custodian is someone responsible for the care of the Asset. For each person entered, the User field, the Custodian field or both must be checked. One person can be nominated as the Primary Contact for the Asset.

B.Users and Custodians can be created for Assets and Locations. A User is someone who uses the Asset or Location. A Custodian is someone responsible for the care of the Asset or Location. For each person entered, either the User field or the Custodian field or both fields must be checked. One person can be nominated as the Primary Contact for the Asset or Location.

C.User and Custodians can be created for Assets, Locations and Configuration Items (CIs). The dialog box has a table window for creating Users and Custodians and another for creating Primary Contacts who are used for communicating information about the Asset, Location or CI by email or bulletin board. A person can be a user or a custodian, or both a user and a custodian.

D.Users and Custodians can be created for Assets and Locations. A User is someone who uses the Asset. A Custodian is someone responsible for the care of the Asset. The Primary Contact is used for communicating information about the Asset or Location by email or bulletin board. These three fields act like a radio button, only one of them can be checked on each person record.

Answer: B

12. Which statement is correct?

A.Any type of Ticket or Work Order can be created from the Asset, Location and Configuration Item (CI) applications.

B.A Service Request, Incident, Problem, Work Order, Change or Release in the Assets, Locations and CI applications can be created.

C.A Service Request or Work Order can be created from the Assets and Locations applications. A Ticket or Work Order cannot be created from the CI application.

D.Any type of Ticket or Work Order can be created from the Assets and Locations applications, but you can not create an activity or task. A Ticket or Work Order cannot be created from the CI application.

Answer: B

13. From which three applications is it possible to create a Work Order? (Choose three.)

- A.Assets
- B.Routes
- C.Job Plan
- D.Work View
- E.Configuration Items
- F.Condition Monitoring

Answer: AEF

14. Which field(s) are hidden on the Asset application and may need the Application Designer in order to display them?

- A.Priority
- B.Failure Class
- C.Calendar and Shift Number
- D.GL Account, Warranty Expiry Date

Answer: D

15. Which Asset fields must have data for the record to be saved to the database?

- A.Site, Location, Type
- B.Site, Status, Location
- C.Site, Status, Asset Up?
- D.Status, Location, Failure Class

Answer: C

16. Which statement is correct?

- A.When creating an Asset, it can be added directly to any storeroom by specifying a Location and rotating item. The balance in the storeroom is incremented by one.
- B.To add a rotating Asset to a storeroom, use the Inventory application and then use the Inventory Adjustments - Current Balance action to increment the balance by one.
- C.When creating an Asset, it can be added directly to a specific site's storeroom by specifying a Location and rotating item. The balance in the storeroom is incremented by one.

D. When creating an Asset that will be initially held in a storeroom, the user creates the Asset then goes to the Storeroom application in order to book it into a specific storeroom so that the balance is incremented by one.

Answer: C

17. Which statement is correct?

A. A condition code can be used on any rotating Asset.

B. A condition code can be added to any type of Asset.

C. A condition code can only be used on a rotating Asset when the item is condition enabled.

D. There is no condition code on an Asset. Condition codes are only associated with items that are purchased or held in a storeroom.

Answer: C

18. Which statement is correct?

A. The classification of a rotating Asset is determined from the classification belonging to its rotating item. The value of an Asset specification record is always updateable.

B. The classification of a rotating Asset is determined from the classification belonging to its rotating item. The value of an Asset specification record is determined from the corresponding attribute's value on the item specification.

C. The classification of a rotating Asset can be entered by the user and the Asset specification is derived from the classification you enter. The value of an attribute can be entered by the user. There is no relationship with the item specification.

D. The classification of a rotating Asset is enterable only if its rotating item has no classification of its own. When the classification has been entered by the user on the Asset, the attribute values are updateable. Otherwise, they are read-only and are determined from the corresponding attribute's value on the item specification.

Answer: B

19. An attribute is added to a ClassStructure record in the Classifications application.

On which applications will the attribute be copied to existing records that use this classification?

- A.Assets, Item, Locations
- B.Job Plan, Ticket Template, Item
- C.all applications that have a Specifications tab
- D.Assets, Item, Job Plan, Preventive Maintenance

Answer: A

20. What are the three types of meters?

- A.Flow, Utility, Rate
- B.Condition, Utility, Gauge
- C.Continuous, Condition, Rate
- D.Continuous, Gauge, Characteristic

Answer: D

21. Where can a Meter Group be referenced?

- A.Asset, Location, Rotating Item
- B.Asset, Item Master, Service Item, Tools
- C.Asset, Location, Preventive Maintenance
- D.Asset, Preventive Maintenance, Condition Monitoring

Answer: A

22. Which statement about Condition Monitoring is the most accurate?

- A.Multiple monitoring points can be created against the same Asset or Location. Before creating these points, a meter of type Gauge or Characteristic must be defined.
- B.Multiple monitoring points can be created against the same Asset. The meter type of these points will be Gauge. A meter does not need to be created as this is created automatically.
- C.Multiple monitoring points can be created against the same Asset. The Asset's current location is provided as a reference. The point type needs to be specified as Gauge or Characteristic before entering other details.
- D.Multiple monitoring points can be created against the same Asset or Location. As each point is created, a Gauge type meter for the measurements to be recorded against needs to be created. Characteristic

meters are not set up in Condition Monitoring, but on the Job Plan.

Answer: A

23. Which statement is true about a characteristic meter in the Condition Monitoring application?

- A. Multiple action values can be entered that belong to an ALN domain. When an action value is recorded, a Job Plan or a PM is used to generate a Work Order.
- B. Multiple action values can be entered that belong to either an ALN or a Numeric domain. When an action value is recorded, a PM is used to generate a Work Order.
- C. An upper limit and a lower limit can be entered. When the last measurement is outside of these limits, a Preventive Maintenance (PM) can be used to generate a Work Order.
- D. When an action value is recorded, a Work Order can be generated using the specified Job Plan. Only one of the values in the ALN domain can be used as an action value.

Answer: A

24. Which record type(s) can belong to a Collection?

- A. Users
- B. Asset, Location, Item
- C. Asset, Location, Configuration Item
- D. Asset, Actual Configuration Item, Deployed Asset, Configuration Item

Answer: C

25. Which statement is true about Asset hierarchies?

- A. A hierarchy of Assets can only be created by using the actions: Apply Item Assembly Structure and Move/Modify Assets.
- B. There are numerous ways of creating or modifying an Asset hierarchy including planning and then executing a group of Asset moves from the Ticket-based applications.
- C. When creating an Asset, it can be assigned a parent Asset. After the record is saved, the hierarchy can be created from the Spare Parts tab or the action Move/Modify Assets.
- D. Asset hierarchies can only be formed for rotating Assets. The most popular methods of creating the hierarchy are to use the action Apply Item Assembly Structure and Move/Modify Assets in the Asset

application and Move/Swap/Modify in the Work Order Tracking application.

Answer: C

26. Which statement about an Asset hierarchy is correct?

A.Once created, additional children can always be added to the hierarchy from the Spare Parts tab when the parent Asset is the current record.

B.Once created, additional children can always be added to the hierarchy as long as the parent is a rotating Asset, it is not decommissioned, and it is not in a storeroom.

C.An Asset hierarchy can be created from rotating and non-rotating Assets and can be set so that the hierarchy can not be modified from the Spare Parts tab in the Asset application.

D.An Asset hierarchy can only be created from rotating Assets using the action Apply Item Assembly Structure. The hierarchy can be locked so that it cannot be modified from the Spare Parts tab in the Asset application.

Answer: C

27. Which three statements are true about using the Move/Modify Assets or Swap Assets actions in the Assets application? (Choose three.)

A.Any Asset can be moved to any site

B.Multiple Assets cannot be moved to another site in one action.

C.An Asset cannot be moved to another site if the Asset number already exists at that site.

D.Multiple Assets can be moved to the same Location or make these Assets a child of another Asset.

E.A hierarchy of Assets can be moved from one Location to another in the same site by selecting just the top parent Asset.

F.A hierarchy of Assets can be moved into a storeroom by selecting just the top parent Asset, if all Assets in the hierarchy are rotating.

Answer: DEF

28. What are the three main differences between the functions of the Move/Modify Assets and Swap Assets actions in the Assets application and the Move/Swap/Modify action in the Work Order Tracking application? (Choose three.)

- A.Future Asset moves can be planned in the Move/Swap/Modify action.
- B.Downtime can be applied to multiple Assets in the Move/Modify Assets action.
- C.Meter readings for Assets and Locations can be entered in the Move/Swap/Modify action.
- D.The specification records of a Location or a Configuration Item can be modified in the Move/Swap/Modify action.
- E.Future changes to the user and custodian records of Assets and Locations can be planned in the Move/Swap/Modify action.
- F.Modifications can be made to the fields, priority, failure class, calendar and shift and changes can be applied to multiple Assets in the Move/Modify Assets action.

Answer: ADE

29. What is a seasonal-based Preventive Maintenance (PM) record?

- A.a PM that defines a period when the PM status is made inactive
- B.a PM that defines the specific dates in the future upon which Work Order will be generated
- C.a PM with a set of defined days of week or periods of time in a year when the PM is considered active and is eligible for Work Order generation
- D.a PM that defines the days of the week when a Work Order can be generated (for example, Saturday - Sunday when the production line has stopped)

Answer: C